

MODERN
MARVIN SIGNATURE® COLLECTION



THE SPIRIT OF MODERN DESIGN LIVES ON.



BORN FROM AND INFORMED BY THE
NEEDS OF ARCHITECTS AND BUILDERS,
OUR **MODERN** LINE IS INTENTIONAL IN
BOTH PROCESS AND PRODUCT.

We've considered how every detail can serve you and your vision,
guided by the quality and innovation that only Marvin can deliver.

THIS IS DESIGN IN YOUR HANDS.

THIS IS OUR MODULAR SYSTEM.

CONSISTENT SIGHTLINES

MINIMIZE SYSTEM
ALIGNMENT GUESSWORK

INTEGRATED

MULL CHANNEL

PRESERVES SIGHTLINES AND SUPPORTS
STRUCTURAL PERFORMANCE

CRANK OUT AND PUSH OUT
CASEMENTS AVAILABLE

Every product works together as part of a visual system to help you design and configure with ease and confidence. Consistent sightlines across all products—along with special innovations like our integrated mull channel—maintain the clean aesthetic so central to modern design.

Pictured below: Modern Direct Glaze and Casement windows (left) and the Modern Multi-Slide door (right)
Certified mulling options are available



MAINTAINS CONSISTENT
NARROW SIGHTLINES
ACROSS ALL PRODUCTS

PREFABRICATED AND
PRE-CONFIGURED
COMPONENTS SAVE
ON INSTALLATION TIME

THIS IS POWER IN SIMPLICITY.

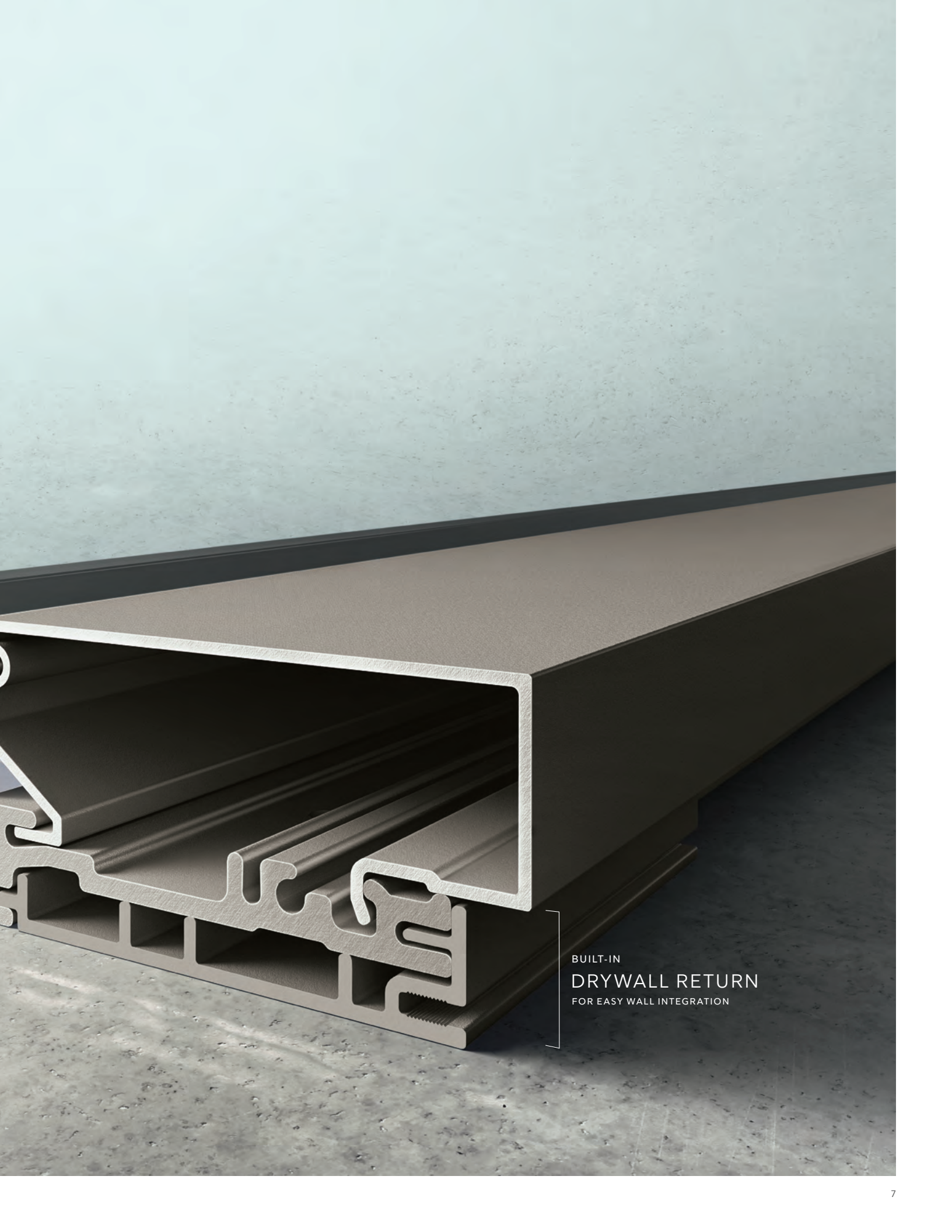
THIS IS OUR PROPRIETARY FRAME.

A new frame design reimagines how modern windows and doors can perform. From exterior to interior, our proprietary High-Density Fiberglass infuses the Modern window and door frame with superior strength and thermal performance. The frame also features an integrated mull channel that enables mull reinforcement while maintaining sightlines and preserving thermal efficiency.

Pictured right: Modern Direct Glaze window cross-section



PROPRIETARY
FRAME DESIGN
HELPS KEEP INTERIOR
TEMPERATURES COMFORTABLE



BUILT-IN
DRYWALL RETURN
FOR EASY WALL INTEGRATION

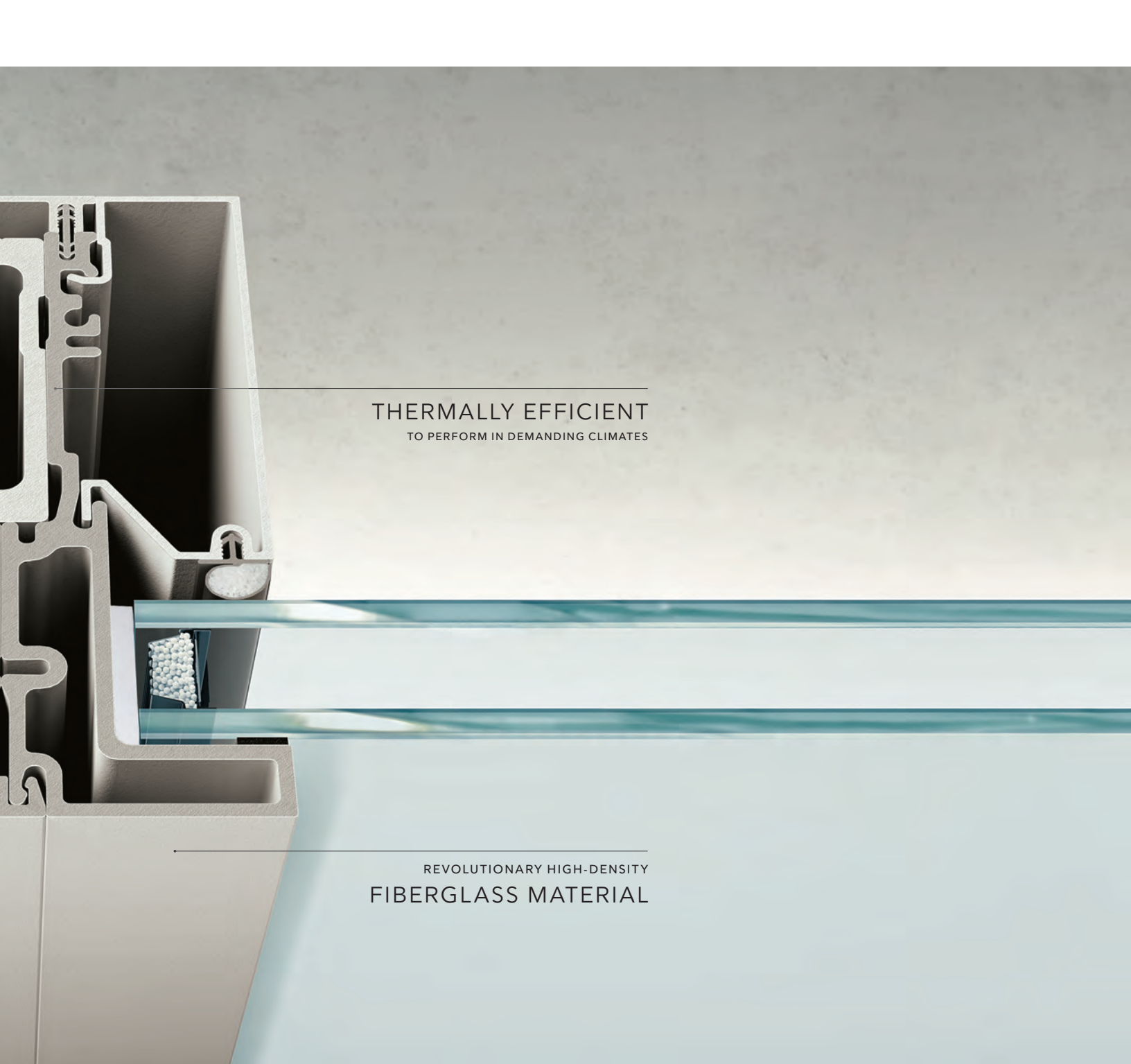


THE FRAME'S INTEGRATED
MULL CHANNEL
ENABLES MULL REINFORCEMENT WITHOUT
ALTERING SIGHTLINES

DURABLE FINISH
MEETS THE HIGHEST INDUSTRY STANDARDS

THIS IS PERFORMANCE BEYOND EXPECTATIONS.

THIS IS HIGH-DENSITY FIBERGLASS.



THERMALLY EFFICIENT
TO PERFORM IN DEMANDING CLIMATES

REVOLUTIONARY HIGH-DENSITY
FIBERGLASS MATERIAL

We envisioned more performance potential for modern windows and doors. So we developed High-Density Fiberglass, a revolutionary material that echoes the look of its modern counterparts with better thermal efficiency.

Pictured above: Modern Direct Glaze mulled window cross-section



ELEMENTAL
ALUMINUM
INTERIOR
WITH LOW-GLOSS FINISH

STRENGTH AND DURABILITY
RATED UP TO PG45
FOR IMPRESSIVE PERFORMANCE

DETAILS THAT
ENHANCE
THE VIEW
LIKE CONCEALED FASTENERS,
MINIMAL BLACK SPACER BARS,
AND BLACK SEALANT



THIS IS HOW IT ALL

COMES TOGETHER.

Combine product ingenuity with pure modern aesthetics and the result is truly stunning. Our Modern line is made to be built big and perform at scale, complemented by the power of critical design details. A low-gloss aluminum interior adds an elemental feel. Black spacer bars and black sealant engineered to maintain a clean daylight opening minimizes visual distractions. And internal covers completely disguise fasteners for clean, crisp edges.

Pictured left: Modern Multi-Slide door with a Clear Anodized interior finish

THIS WAS MADE FOR YOU.



WE PARTNERED WITH ARCHITECTS AND BUILDERS TO DEVELOP A PROCESS THAT ANSWERS THEIR NEEDS AT EVERY STEP ALONG THE WAY.



DELIVERY

We worked to create packaging and delivery systems that help you plan better and make the best use of your time and resources.



It begins with **PRODUCT WEIGHTS** listed on the quote and order confirmation—so you can plan proper equipment and resources in advance. We also provide prominent **WEIGHT LABELS** on every Modern product for easy on-site reference.



All products are packaged to protect components during shipping and handling. Ergonomic **LIFT POINTS** on each end of the unit help you leverage heavy products. Staple-free **CARDBOARD BOOTS** are fully wrapped around each corner. Dual skid plates provide rigidity and maneuverability, so you can slide products across different floor surfaces.

OTHER CONSIDERATIONS

- + Glass is covered with protective film
- + Each unit is stretch wrapped



INSTALLATION

On the job site, efficiency is key. So we created thoughtful products and accessories that ensure the installation runs smoothly.



A **JOB BOX** contains all the important parts and documentation you need, in one convenient place. Specially stocked according to your order, inside every job box you'll find:

- + Product hardware
- + Installation screws
- + Injection sealant
- + Installation instructions
- + Order information
- + Warranty registration
- + Touch-up and repair kits
- + And more

Never lose time tracking down an extra part or reference material.

OTHER CONSIDERATIONS

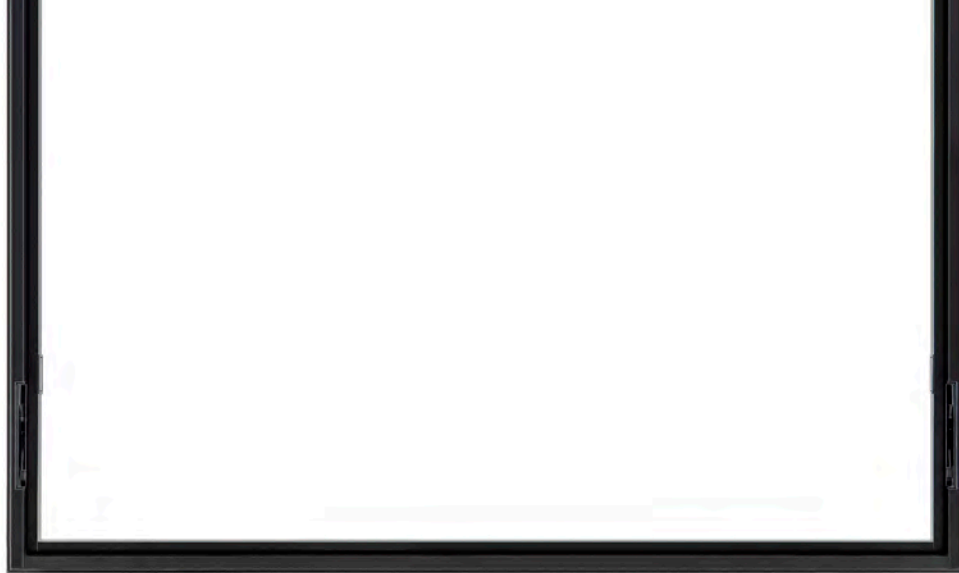
- + Pre-fabricated and pre-configured components reduce install time
- + Drywall recess in the frame accepts a drywall return for seamless integration





MADE TO BE BUILT BIG AND PERFORM AT SCALE.

MODERN WINDOWS



INTERIOR VIEW – PUSH OUT AWNING SHOWN IN EBONY WITH MATTE BLACK HARDWARE

MODERN AWNING WINDOW

FEATURES

Crank Out and Push Out available

Sleek and modern form

Numerous sizes and configurations available, including right- or left-hand operating

Screens are intentionally designed to achieve a cohesive look with the window

Frame recess accepts a drywall return

Horizontal or vertical ribbon mulling capabilities

HARDWARE FOR ALL AWNING

Concealed multi-point lock system

One locking lever to engage or disengage multi-point locks

Stainless steel hinges

Proprietary Crank Out and Push Out designed hardware

HARDWARE FOR PUSH OUT

Discreet, nested handle at the sash and frame

HARDWARE FOR CRANK OUT

Exclusive rotating handle design

GLASS OPTIONS

Dual or triple-pane insulated glass

Interior cover depths vary based on glass thickness

Black spacer and dark silicone sealant

Low E1, E2, E3, ELR, or ERS glass options

Specialty glass: frosted, obscure, and gray or bronze tint

Argon or Krypton-Argon blend gas

CONFIGURATIONS AND MULLING

Jamb depth 4 1/2"

Awning to awning mulled frames 5 9/16" wide

Seamless mulled assemblies with aluminum reinforcement

THERMAL PERFORMANCE

Dual-pane IG low E2 with Argon 0.28 U-Factor



INTERIOR VIEW – CRANK OUT AWNING SHOWN IN EBONY WITH MATTE BLACK HARDWARE

UNIT TYPE	AIR TESTED TO PSF	WATER TESTED TO PSF	DESIGN PRESSURE	CERTIFICATION RATING	MAX FRAME SIZE UNIT	
AWNING					WIDTH	HEIGHT
CRANK OUT	1.57	12.1	50	CW-PG50-FW	64"	96"
CRANK OUT	1.57	12.1	45	LC-PG45-FW	96"	64"
PUSH OUT	1.57	12.1	45	CW-PG45-FW	96"	64"
CRANK OUT	1.57	12.1	50	CW-PG50-FW	72"	72"
PUSH OUT	1.57	12.1	50	CW-PG50-FW	89"	48"
MULL ASSEMBLIES					WIDTH	HEIGHT
ALL PRODUCTS	1.57	12.1	40	CW-PG40-FW	168"	96"
ALL PRODUCTS	1.57	12.1	40	CW-PG40-FW	96"	168"



INTERIOR VIEW – PUSH OUT CASEMENTS SHOWN IN EBONY WITH MATTE BLACK HARDWARE

MODERN CASEMENT WINDOW

FEATURES

- Crank Out and Push Out available
- Sleek and modern form
- Numerous sizes and configurations available, including right- or left-hand operating
- Screens are intentionally designed to achieve a cohesive look with the window
- Sash can slide across frame for easy wash mode
- Frame recess accepts a drywall return
- Horizontal or vertical ribbon mulling capabilities

HARDWARE FOR ALL CASEMENT

- Concealed multi-point lock system
- One locking lever to engage or disengage multi-point locks
- Stainless steel hinges
- Proprietary Crank Out and Push Out designed hardware

HARDWARE FOR PUSH OUT

- Discreet, nested handle at the sash and frame
- Optional low or mid-height handle and lock placement

HARDWARE FOR CRANK OUT

- Exclusive rotating handle design

GLASS OPTIONS

- Dual or triple-pane insulated glass
- Interior cover depths vary based on glass thickness
- Black spacer and dark silicone sealant
- Low E1, E2, E3, ELR, or ERS glass options
- Specialty glass: frosted, obscure, and gray or bronze tint
- Argon or Krypton-Argon blend gas

CONFIGURATIONS AND MULLING

- Casement to casement muller frames 5⁹/₁₆" wide
- Seamless muller assemblies with aluminum reinforcement

THERMAL PERFORMANCE

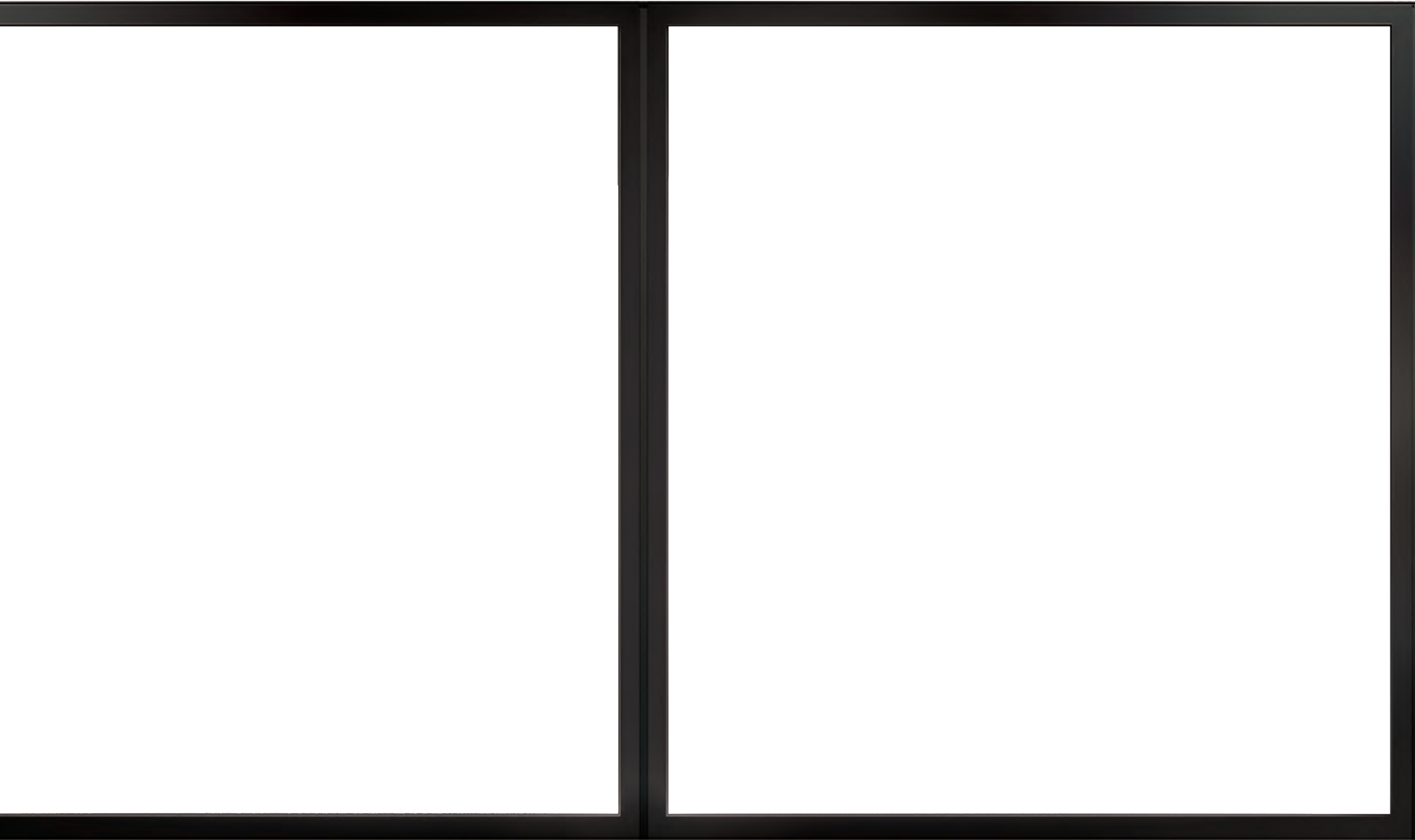
- Dual-pane IG low E2 with Argon 0.28 U-Factor

For the most complete technical information, visit marvin.com or talk with your Modern dealer.



EXTERIOR VIEW – CASEMENTS SHOWN IN EBONY

UNIT TYPE	AIR TESTED TO PSF	WATER TESTED TO PSF	DESIGN PRESSURE	CERTIFICATION RATING	MAX FRAME SIZE UNIT	
CASEMENT					WIDTH	HEIGHT
CRANK OUT AND PUSH OUT	1.57	12.1	50	CW-PG50-FW	36"	102"
CRANK OUT AND PUSH OUT	1.57	12.1	50	CW-PG50-FW	40"	96"
CRANK OUT AND PUSH OUT	1.57	12.1	50	CW-PG50-FW	44"	92"
MULL ASSEMBLIES					WIDTH	HEIGHT
ALL PRODUCTS	1.57	12.1	40	CW-PG40-FW	168"	96"
ALL PRODUCTS	1.57	12.1	40	CW-PG40-FW	96"	168"



EXTERIOR VIEW – DIRECT GLAZE SHOWN IN EBONY

FEATURES

- Large expanses of glass for maximum views with numerous configurations and sizes available
- Rectangular and polygon shapes
- Frame recess accepts a drywall return
- Horizontal or vertical ribbon mulling capabilities
- Non-certified mulling capabilities

GLASS OPTIONS

- Dual or triple-pane insulated glass
- Interior cover depths vary based on glass thickness
- Argon or Krypton-Argon gas blend
- Black spacer and silicone sealant
- Low E1, E2, E3, ELR, or ERS glass options
- Specialty glass: frosted, obscure, and gray or bronze tint

MULLING

- Mulled frames are less than 3" wide
- Approximate 3" frame divider simulates a mulled Direct Glaze frame

CONFIGURATIONS

- Rectangle /square
- Isosceles triangle
- Right triangle, right or left
- Trapezoid, right or left
- Pentagon

SIZING

Max frame size certified	141 3⁄8" x 93 3⁄8"
Jamb depth	4 1⁄2"

For the most complete technical information, visit marvin.com or talk with your Modern dealer.



**SINGLE UNIT
PERFORMANCE RATINGS**

Air tested to PSF	6.24
Water tested to PSF	7.5
Performance grade	CW-PG40-FW
Max frame size height	93 3/8"
Max frame size width	141 3/8"

**VERTICAL OR HORIZONTAL MULLED UNITS
PERFORMANCE RATINGS**

Air tested to PSF	1.57
Water tested to PSF	6.0
Performance grade	CW-PG40-FW
Max frame size height	96"
Max frame size width	168"
Max tributary width or height	84"

THERMAL PERFORMANCE

Dual-pane IG low E2 with Argon	0.28 U-Factor
--------------------------------	---------------

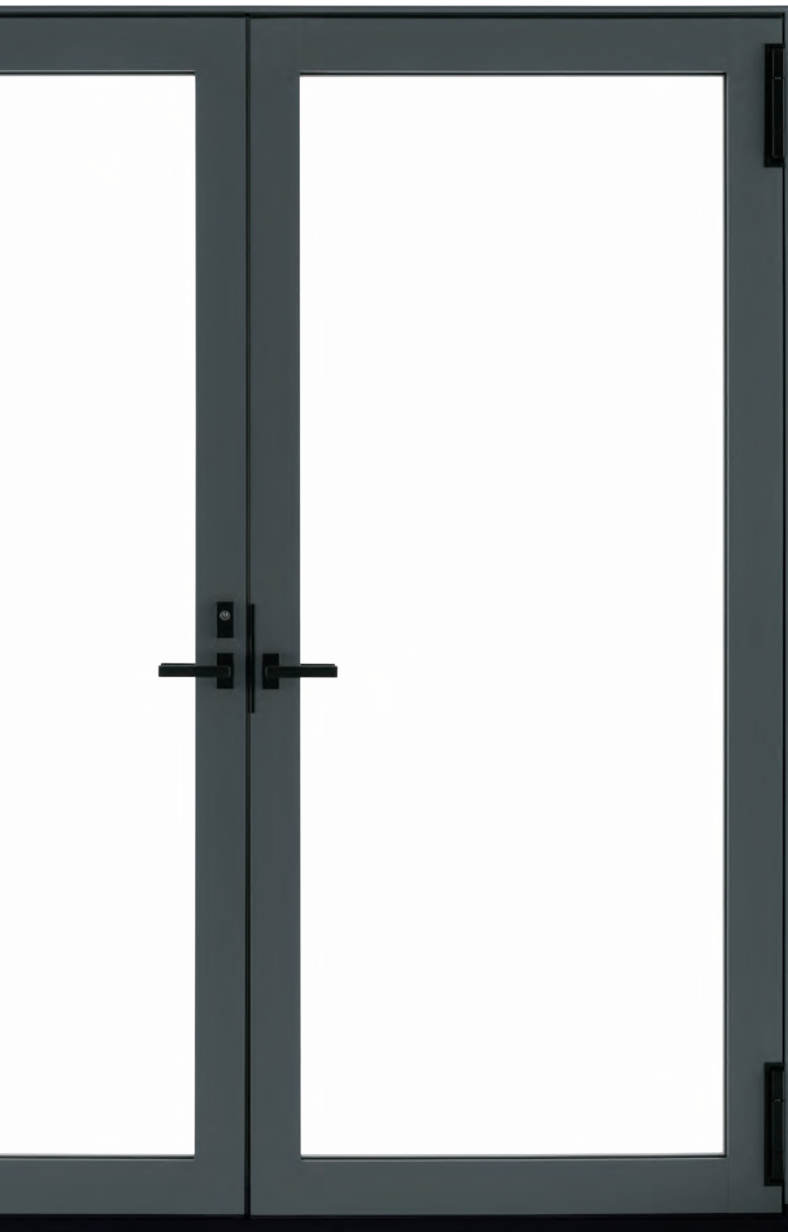
PERFORMANCE ON A GRANDER SCALE.

MODERN DOORS

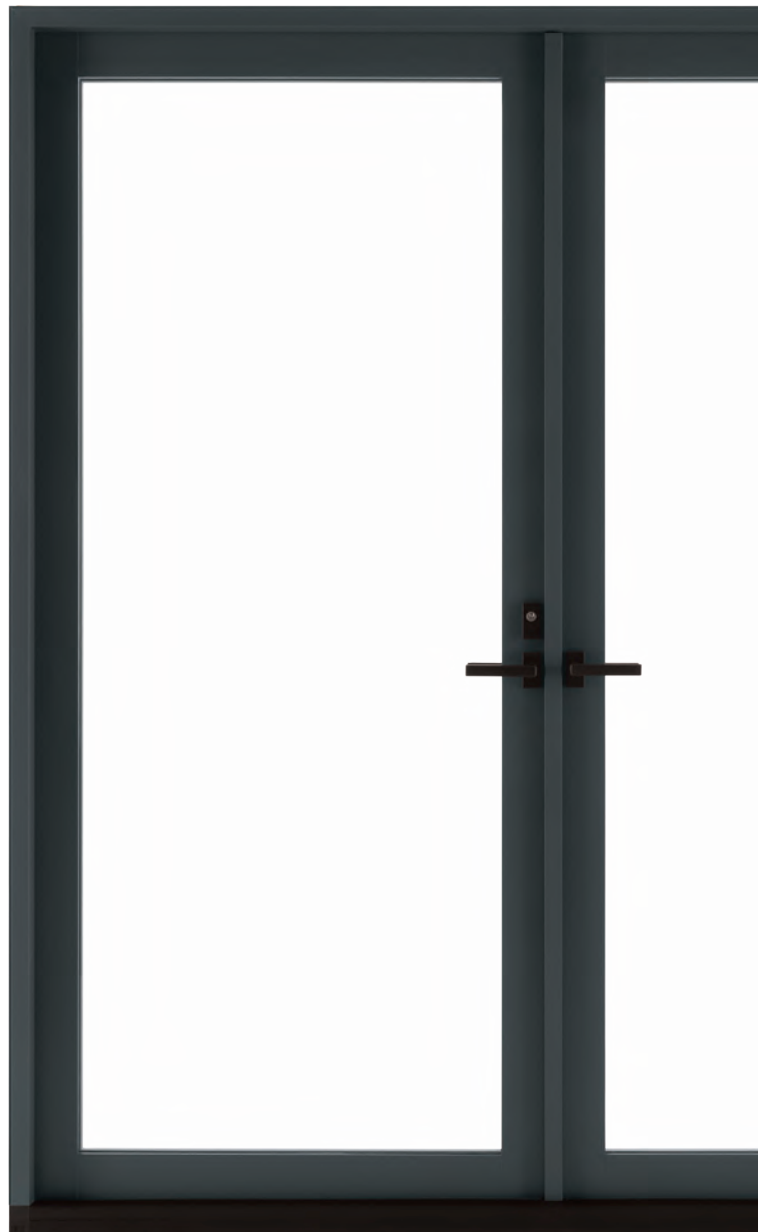




MODERN SWINGING DOOR



EXTERIOR VIEW – OUTSWING DOOR SHOWN IN
GUNMETAL WITH MATTE BLACK HARDWARE



EXTERIOR VIEW – INSWING DOOR SHOWN IN
GUNMETAL WITH MATTE BLACK HARDWARE

For the most complete technical information, visit marvin.com or talk with your Modern dealer.

FEATURES

1 and 2 panel units, inswing and outswing

Unequal panel widths

Minimalist handles

Two 7" square barrel hinges for all door heights

Low-profile, performance, and saddle sills

HARDWARE

Minimalist hardware with multi-point lock

Sleek design for unobstructed views

7" adjustable hinge

GLASS OPTIONS

Dual or triple-pane insulated glass

Argon or Krypton-Argon blend gas

Black spacer and dark silicone sealant

Low E1, E2, E3, ELR, or ERS glass options

Specialty glass: frosted, obscure, and gray or bronze tint

ADD-ONS

Lock status sensor

Retractable screens

PERFORMANCE GRADES

O Performance Sill up to CW-PG40-FD

O Low Profile Sill up to CW-PG30-FD

O or X Performance Sill up to LC-PG40-SHD

O or X Low Profile Sill up to LC-PG30-SHD

XO OX XX Performance Sill up to LC-PG40-SHD

XO OX XX Low Profile Sill up to LC-PG30-SHD

CONFIGURATIONS AND SIZING

Max operator size: 4' x 12'

Max stationary size: 8' x 12'

1-2 panel configurations

Unequal panel widths

Door to door mulling

UNIT TYPE		MIN FRAME SIZE UNIT		MAX FRAME SIZE UNIT	
UNI-DIRECTIONAL		WIDTH	HEIGHT	WIDTH	HEIGHT
O		16"	16"	144"	144"
X		20"	49"	48"	144"
OX OR XO		34"	49"	173"	144"
XX		38"	49"	96"	144"

O = Stationary Panel X = Operating Panel

* Panel quantity per unit limited to two panels



MODERN MULTI-SLIDE DOOR

INTERIOR VIEW – MULTI-SLIDE DOOR SHOWN IN EBONY WITH MATTE BLACK HARDWARE

For the most complete technical information, visit marvin.com or talk with your Modern dealer.

FEATURES

Large expanses of glass for maximum views with numerous configurations and sizes available

Consistent panel thickness with narrow stiles and rails, regardless of configuration or size

Minimalist hardware designed for superior functionality, features a sleek and modern form

Low-profile, performance, and saddle sills in black or bronze

HARDWARE

Minimal pull and latch handles

Keyed or non-keyed options available

Multi-point lock

Quad rollers with end adjustment

GLASS OPTIONS

Dual or triple-pane insulated glass

Argon or Krypton-Argon blend gas

Black spacer and dark silicone sealant

Low E1, E2, E3, ELR, or ERS glass options

Specialty glass: frosted, obscure, and gray or bronze tint

ADD-ONS

Automatic control

Lock status sensor

Retractable screen

PERFORMANCE GRADES*

Uni-directional stacked	up to LC-PG45-SD
-------------------------	------------------

Uni-directional pocket	up to LC-PG45-SD
------------------------	------------------

Bi-parting stacked	up to LC-PG40-SD
--------------------	------------------

Bi-parting pocket	up to LC-PG40-SD
-------------------	------------------

THERMAL PERFORMANCE

Dual-pane IG low E2 with Argon	0.28 U-Factor
--------------------------------	---------------

MULTI-SLIDE CONFIGURATIONS AND SIZING

Over 30 configurations available

- + Uni-Directional configurations: 1 to 6 panels, available in stacked or pocket

- + Bi-Parting configurations: 2 to 10 panels, available in stacked or pocket

Sized to order up to 6' x 12' panels

Meeting stiles are less than 3" wide



* Varies with sill type

MINIMUMS AND MAXIMUMS

MODERN MULTI-SLIDE DOOR STACKED

UNIT TYPE	MIN FRAME SIZE UNIT		MAX FRAME SIZE UNIT		MAX FRAME SIZE UNIT	
			Based on 6ft wide panels		Based on > 6ft wide panels*	
UNI-DIRECTIONAL	WIDTH	HEIGHT	WIDTH	HEIGHT	WIDTH	HEIGHT
OX OR XO	55 ¹¹ / ₁₆ "	62 ³ / ₆₄ "	143 ¹¹ / ₁₆ "	144"	191 ¹¹ / ₁₆ "	120"
OXX OR XXO	80 ¹³ / ₁₆ "	62 ³ / ₆₄ "	212 ¹³ / ₁₆ "	144"	284 ¹³ / ₁₆ "	120"
OXXX OR XXXO	105 ¹⁵ / ₁₆ "	62 ³ / ₆₄ "	281 ¹⁵ / ₁₆ "	144"	NA	NA
OXXXX OR XXXXO	131 ¹ / ₁₆ "	62 ³ / ₆₄ "	351 ¹ / ₁₆ "	144"	NA	NA
OXXXXX OR XXXXXO	156 ³ / ₁₆ "	62 ³ / ₆₄ "	420 ³ / ₁₆ "	144"	NA	NA

UNIT TYPE	MIN FRAME SIZE UNIT		MAX FRAME SIZE UNIT		MAX FRAME SIZE UNIT	
			Based on 6ft wide panels		Based on > 6ft wide panels*	
BI-PARTING	WIDTH	HEIGHT	WIDTH	HEIGHT	WIDTH	HEIGHT
OX - XO	109 ³ / ₄ "	76 ³⁹ / ₆₄ "	285 ³ / ₄ "	144"	381 ³ / ₄ "	120"
OXX - XXO	160"	76 ³⁹ / ₆₄ "	424"	144"	568"	120"
OXXX - XXXO	210 ¹ / ₄ "	76 ³⁹ / ₆₄ "	562 ¹ / ₄ "	144"	NA	NA
OXXXX - XXXXO	260 ¹ / ₂ "	76 ³⁹ / ₆₄ "	700 ¹ / ₂ "	144"	NA	NA

O = Stationary Panel X = Operating Panel

For the most complete technical information, visit marvin.com or talk with your Modern dealer.

MINIMUMS AND MAXIMUMS

MODERN MULTI-SLIDE DOOR POCKET

UNIT TYPE	MIN FRAME SIZE UNIT		MAX FRAME SIZE UNIT		MAX FRAME SIZE UNIT	
			Based on 6ft wide panels		Based on > 6ft wide panels*	
UNI-DIRECTIONAL	WIDTH	HEIGHT	WIDTH	HEIGHT	WIDTH	HEIGHT
PX OR XP	30 ⁹ / ₁₆ "	68 ¹⁹ / ₆₄ "	74 ⁹ / ₁₆ "	144"	98 ⁹ / ₁₆ "	120"
PXX OR XXP	55 ¹¹ / ₁₆ "	68 ¹⁹ / ₆₄ "	143 ¹¹ / ₁₆ "	144"	191 ¹¹ / ₁₆ "	120"
PXXX OR XXXP	80 ¹³ / ₁₆ "	68 ¹⁹ / ₆₄ "	212 ¹³ / ₁₆ "	144"	NA	NA
PXXXX OR XXXXP	105 ¹⁵ / ₁₆ "	68 ¹⁹ / ₆₄ "	281 ¹⁵ / ₁₆ "	144"	NA	NA
PXXXXX OR XXXXXP	131 ¹ / ₁₆ "	68 ¹⁹ / ₆₄ "	351 ¹ / ₁₆ "	144"	NA	NA
PXXXXXX OR XXXXXXP	156 ³ / ₁₆ "	68 ¹⁹ / ₆₄ "	420 ³ / ₁₆ "	144"	NA	NA

UNIT TYPE	MIN FRAME SIZE UNIT		MAX FRAME SIZE UNIT		MAX FRAME SIZE UNIT	
			Based on 6ft wide panels		Based on > 6ft wide panels*	
BI-PARTING	WIDTH	HEIGHT	WIDTH	HEIGHT	WIDTH	HEIGHT
PX - XP	59 ¹ / ₂ "	80 ⁵⁵ / ₆₄ "	147 ¹ / ₂ "	144"	195 ¹ / ₂ "	120"
PXX - XXP	109 ³ / ₄ "	80 ⁵⁵ / ₆₄ "	285 ³ / ₄ "	144"	381 ³ / ₄ "	120"
PXXX - XXXP	160"	80 ⁵⁵ / ₆₄ "	424"	144"	NA	NA
PXXXX - XXXXP	210 ¹ / ₄ "	80 ⁵⁵ / ₆₄ "	562 ¹ / ₄ "	144"	NA	NA
PXXXXX - XXXXXP	260 ¹ / ₂ "	80 ⁵⁵ / ₆₄ "	700 ¹ / ₂ "	144"	NA	NA

P = Pocket Panel X = Operating Panel



MODERN DESIGN OPTIONS.

LIMITLESS POSSIBILITIES.



DIVIDED LITES

Achieve a unique aesthetic with divided lites on any Modern window or door. Select from a variety of customizable patterns, available on both dual pane and triple pane products.

Pictured right: Exterior detail of Simulated Divided Lites in Ebony

Pictured below: Modern Inswing door



SIMULATED DIVIDED LITES (SDL)

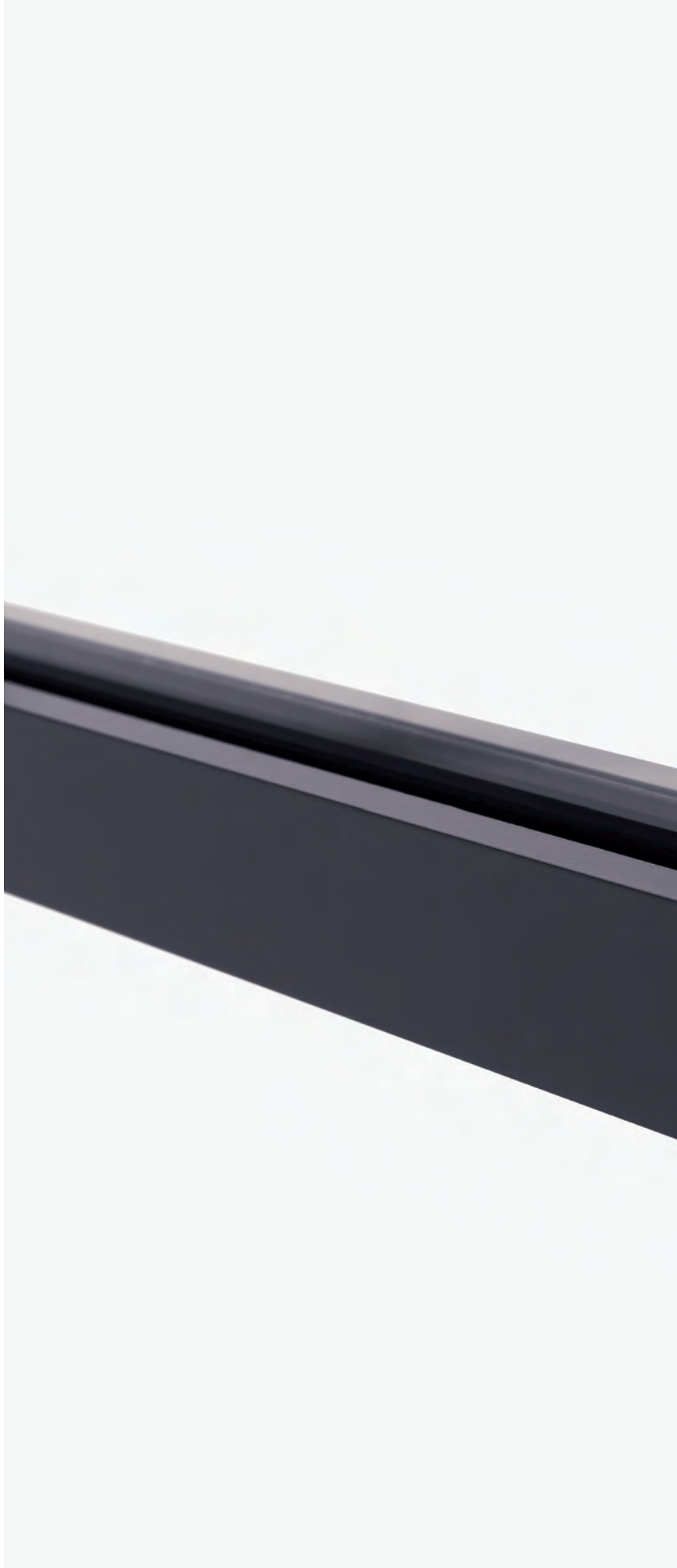
Aluminum interior + exterior

7/8" or 1 1/8" width

SIMULATED FRAME

Aluminum interior, high density fiberglass exterior

2 7/8" width





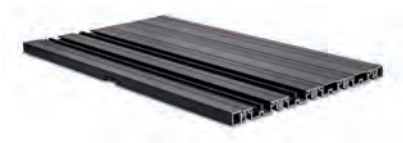
SILL OPTIONS

We’ve innovated every aspect of the new Modern line, right down to the smallest details. We offer flush sill options for both temperate and inclement conditions as well as a performance sill for areas where recessing isn’t an option.

Modern door sills are engineered with our proprietary High Density Fiberglass for superior strength and thermal performance. Available in Ebony or Bronze with aluminum liners and covers.

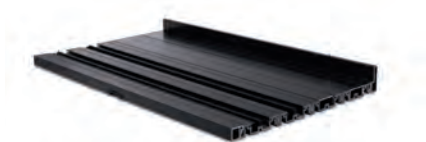
Pictured right: Detail of the Flush Sill

MULTI-SLIDE DOOR SILL OPTIONS



FLUSH SILL

- Recommended for protected areas
- Not certified for performance
- ADA compatible when properly installed



PERFORMANCE SILL

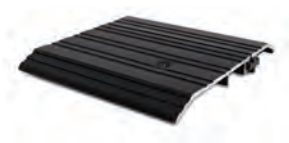
- Recommended for areas where performance is needed and the sill is not recessed
- Rated and certified for performance



HIGH PERFORMANCE SILL

- Rated and certified for superior performance
- ADA compatible when properly installed

SWINGING DOOR SILL OPTIONS



SADDLE SILL

- Not certified for performance
- ADA compatible when properly installed
- Available in dark bronze in thermally broken aluminum



LOW-PROFILE SILL

- Rated and certified for performance
- ADA compatible when recessed



PERFORMANCE SILL

- Rated and certified for performance
- Not ADA compatible



CURATED COLORS

INTERIOR COLORS • LOW-GLOSS ALUMINUM

GUNMETAL

BRONZE

EBONY

CLEAR ANODIZED

STONE WHITE

Our intentionally selected color palette evokes the elemental nature of modern design. Choose split interior and exterior color finishes or matching finishes designed to coordinate.

EXTERIOR COLORS • HIGH-DENSITY FIBERGLASS

GUNMETAL

BRONZE

EBONY

SILVER

STONE WHITE



MATTE BLACK

STONE WHITE

SILVER

SATIN NICKEL

HARDWARE FINISHES



From low-profile handles to nested locks, our hardware is designed to complement clean, modern lines while delivering reliable performance. Select from a variety of finishes and styles to fit your vision.

Pictured above: Casement and Awning Crank Out hardware and Multi-Slide door interior and exterior multi-point lock system handles

SCREENS

All screens are intentionally designed for uninterrupted views, ease of use, and a sleek modern look.

Pictured right: Modern Awning window

Pictured below: Modern Casement Crank Out window



CASEMENT AND AWNING PUSH OUT

Concealed screen frame does not disrupt sightlines or view

High transparency mesh

Innovative latch color matched to the interior

Concealed hinges support operability

CASEMENT AND AWNING CRANK OUT

Concealed screen frame does not disrupt sightlines or view

High transparency mesh

Innovative latch color matched to the interior

Crank in and out operability









THIS IS ONLY THE BEGINNING.

EXPERIENCE IT AT

YOUR MODERN DEALER TODAY.



At Marvin, we're driven to imagine and create better ways of living by designing windows and doors that open new possibilities for the people who use them.

To learn more visit us at **MARVIN.COM/MODERN**

19983042

Marvin Lumber and Cedar Co., Warroad, MN 56763.

©2021 Marvin Lumber and Cedar Co., LLC. All rights reserved.

®Registered trademark of Marvin Lumber and Cedar Co., LLC.

Information regarding status of patent applications, as well as product features and specifications, is subject to change without notice. August 2021.

For warranty information, please visit marvin.com

Please note: Colors shown in printed materials are simulations and may not precisely duplicate product or finish colors. Contact your local Modern dealer to view actual product and finish color samples.