



WINDOW + DOOR  
REPLACEMENT  
SOLUTIONS

**PRODUCTS +  
OPTIONS**





## EVERY PRODUCT EVERY POSSIBILITY

Between our Ultimate, Elevate, and Essential product lines, you'll find everything you need to complete your replacement project with Marvin.

To find out more about the replacement process, download our **Window and Door Replacement Guide** at [marvin.com/replacement](https://marvin.com/replacement)



## INTRODUCTION

---

THE MARVIN PORTFOLIO	4
QUALITY	6
WINDOW + DOOR TERMS	8

## ULTIMATE 16

---

WINDOWS	18
DOORS	34
OPTIONS	42

## ULTREX® FIBERGLASS 66

---

## ELEVATE 68

---

WINDOWS	70
DOORS	80

## ESSENTIAL 84

---

WINDOWS + DOORS	86
-----------------	----

## ELEVATE + ESSENTIAL OPTIONS 96

---

INTERIORS + EXTERIORS	98
HARDWARE STYLES + FINISHES	102
ADDITIONAL OPTIONS	104

## GLOSSARY 110

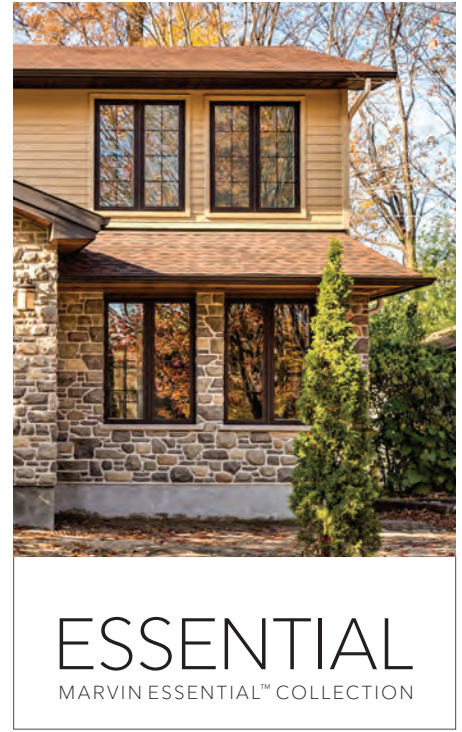
---

# THE MARVIN PORTFOLIO

The Marvin portfolio is organized into three product collections, each defined by degree of design detail, flexibility, and customization opportunities.

Curated solutions provide exceptional performance, energy efficiency, low maintenance, and long-lasting quality you can see, feel, and touch.





**SIZING**

Custom sized windows and doors built to your home's exact specifications

**DESIGN FLEXIBILITY**

The highest level of design flexibility with the most extensive offering of options

Wide range of design options with expedited delivery for quick-turn projects

Tailored set of design options with accelerated delivery

**INTERIORS**

Wood interiors with six species options. Factory finish in white or Designer Black paint, six stains, clear coat, or primed for custom painting

Wood interiors. Factory paint in white or Designer Black, bare wood for painting or staining, or clear coat

Low-maintenance fiberglass interiors in white, black, or dark bronze

**EXTERIORS**

Long-lasting, low-maintenance exteriors with best-in-class finishes for superior durability  
Extruded Aluminum (19 colors or custom color) or Wood exteriors (four species)

Long-lasting, low-maintenance exteriors with best-in-class finishes for superior durability

Extra durable Ultrex® fiberglass exteriors in six color options

**HARDWARE**

Extensive selection of window and door hardware including Gallery Hardware.

Window and door hardware in six finish options  
Two door hardware styles

**SCREENS**

Retractable, stained/painted wood, or color matched aluminum surrounds

Stainable interior wood or color matched surrounds

Color matched surrounds

**+ OPTIONS**

Integrated shades, concealed sensors for security systems, and Wash

**COASTAL + WATERFRONT**

All Marvin windows and doors are well suited for coastal or waterfront areas, with special products and hardware specifically designed for hurricane zones



**QUALITY IS  
STANDARD**

**DISCERNING STANDARDS  
FOR MATERIAL SELECTION**

...

Our commitment to quality starts with discerning standards for material selection. We source only the highest quality and most durable materials for our window and door products.

**INDUSTRY-LEADING  
FINISH**

...

Marvin's exterior finishes are best in class – no competitor has achieved a higher finish verification.





**DURABLE,  
HIGH-PERFORMING  
PRODUCTS**

...

Our team of experts continues to push boundaries—designing, testing, and refining products to ensure durability and long-term performance.



**AWARD-WINNING  
PRODUCTS**

...

Builders and industry professionals have repeatedly recognized Marvin as Best in Quality in the BUILDER Magazine Brand Use Study.



**COMPREHENSIVE  
WARRANTY**

...

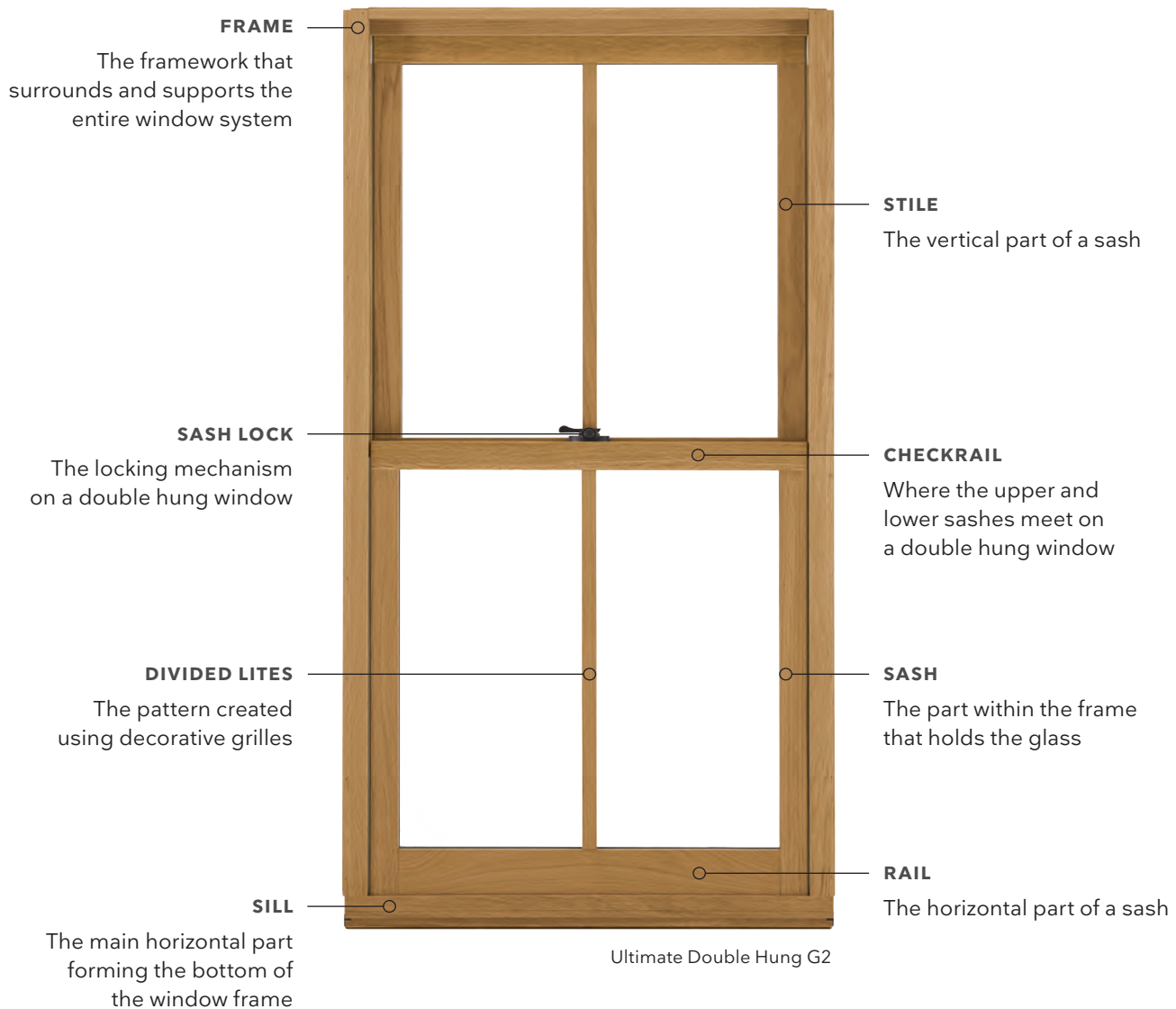
Our comprehensive warranty provides peace of mind so you can enjoy your windows and doors for years to come.



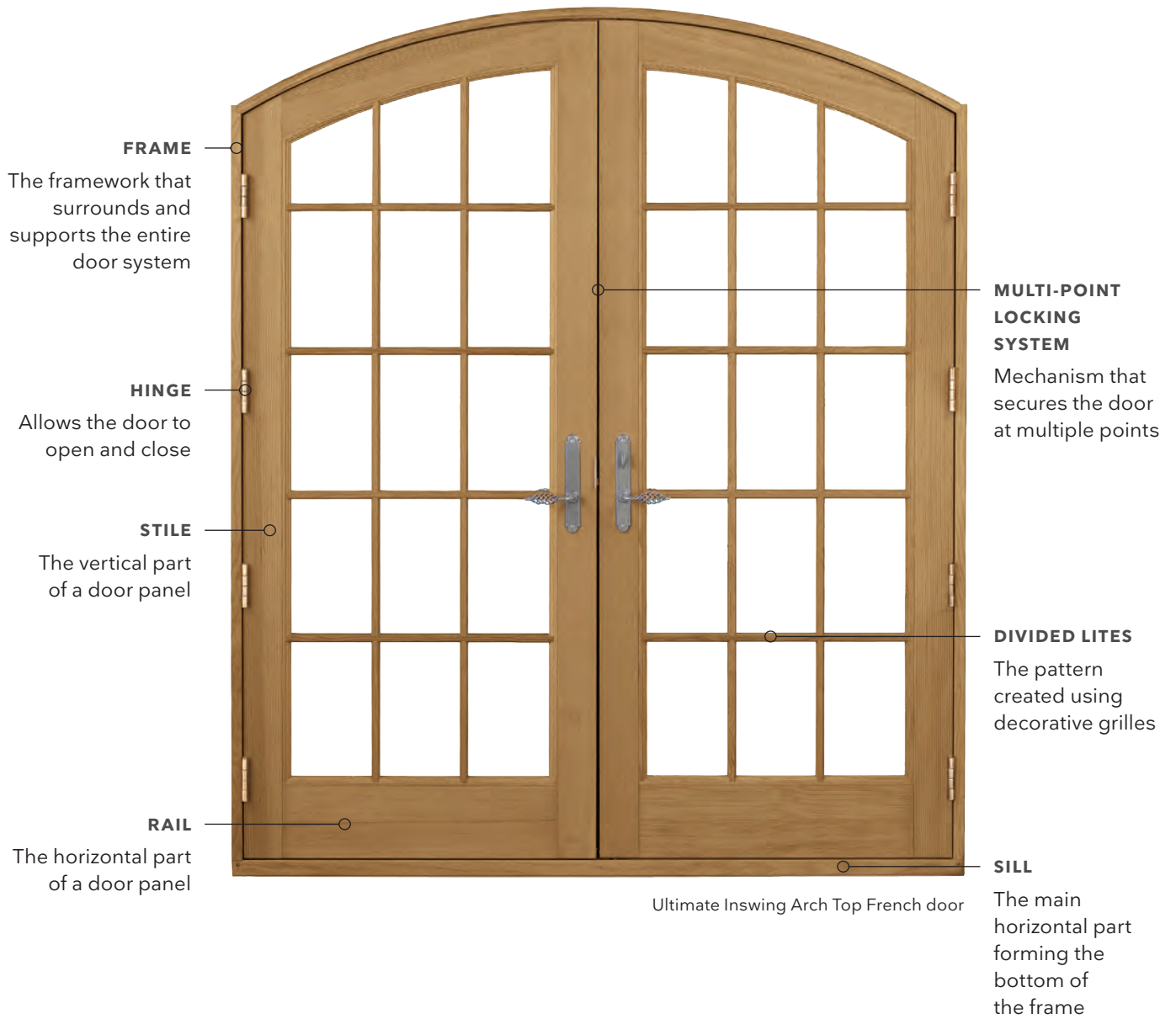


# COMMON WINDOW + DOOR TERMS

## WINDOWS



# DOORS



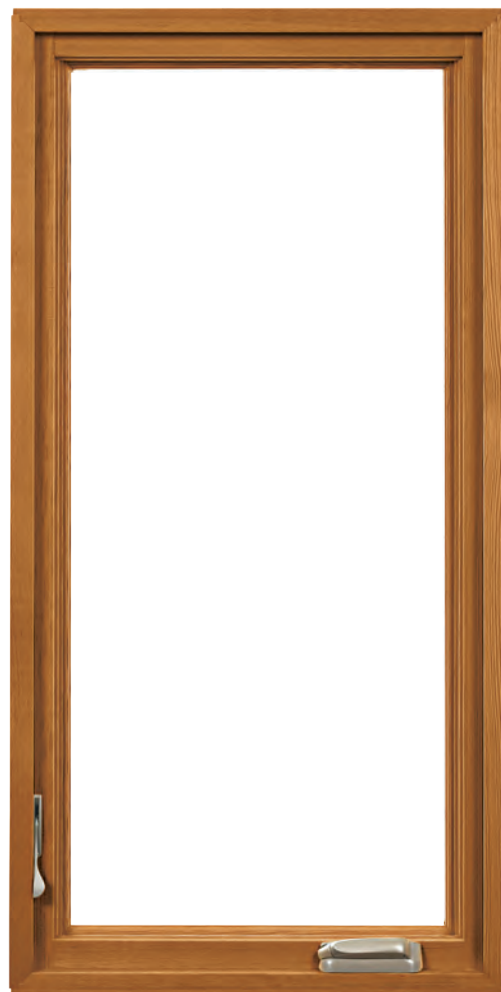
Ultimate Inswing Arch Top French door

# WINDOW TYPES



## **DOUBLE HUNG**

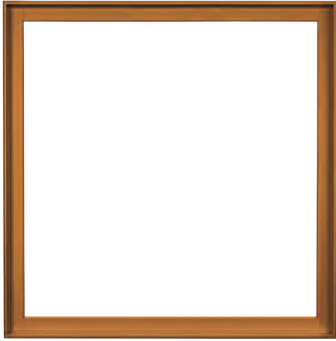
Both the top and bottom sash move for multiple venting options and tilt in for easy cleaning. Also available as a single hung where the top sash is stationary.



## **CASEMENT**

Hinged on either side to open like a door. Choose a crank out or push out.

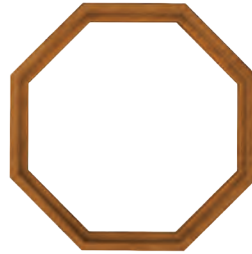


**PICTURE**

Large window that doesn't open, frequently chosen to complement windows that do open. Venting options are available.

**ROUND TOP**

Choose a rounded or arched top on stationary windows, double hungs or casements for a stylish twist.

**SPECIALTY SHAPE**

Fully customized to fit a unique opening or style. Some styles open, but shaped windows are often stationary.

**AWNING**

Hinged on the top of the frame and swings outward from the bottom.

**GLIDER**

Has a sash that glides to the left or right. It can also feature a large center picture window with two side windows that open, or two center windows that slide apart to create a pass-through.

**BOW OR BAY**

A series of windows joined together in a curve or angle. Bow windows create a more gradual arc with more than three windows. A bay window typically features three windows and has a head and seat board.

# DOOR TYPES



Ultimate Inswing French door.



#### SLIDING DOORS

One or more opening panels glide effortlessly on a track. Available in combinations with up to four panels.



#### SWINGING DOORS

One or two door panels open, swinging in or out. Available in single panel or combinations with up to four panels.



#### SCENIC

Expansive sizes with large panes of glass for seamless indoor/outdoor living and uninterrupted views. Choose from Lift and Slide, Multi-Slide, and Bi-Fold variations.

Ultimate Bi-Fold door

#### FRENCH DOORS

When you picture a French door you might imagine a European-style double door that swings open to reveal a beautiful garden or patio. While that might be true, French doors don't always swing open. Some are sliding French doors. When it comes to exterior doors, the difference between a French door and a patio door isn't in the way it operates – it's actually in the width of the stiles and rails on the door panel itself. The vertical stiles on a French door will be wider, and the rails at the top and bottom are taller, giving a more traditional appearance. Patio doors have slimmer profiles with more glass area and a more contemporary look, and they can swing or slide open just like a French door.



# INSERT VS. FULL-FRAME REPLACEMENT



## WHAT TYPE OF WINDOW REPLACEMENT DO I NEED?

**Insert replacements** allow new windows to be installed within the existing frame after old sash, hardware, and covers are removed.

- Also known as frame-in-frame or a pocket window
- An option for structurally sound wood or aluminum frames
- Preserves existing interior and exterior trim
- Less extensive installation and typically lower cost

**Full-frame replacements** require existing windows to be completely removed down to the studs, and then new windows are installed in the opening.

- Allows for inspection and repair of concerns like water damage
- Necessary for vinyl or damaged frames and often for remodels
- Requires removal of interior and exterior trim and occasionally siding
- More extensive installation and typically higher cost

## SAFE. SECURE. BEAUTIFUL.

### Egress

An **egress window** allows for an emergency exit from your home. You'll need to consider egress when replacing **bedroom windows**.

Since building codes have changed over time, the type or size of window that's currently in a bedroom may not comply with current code. We offer a wide range of products that provide egress in almost all existing bedroom window sizes, while maintaining a style that's right for your home.

### Window Opening Control Devices

#### Opening Control Device (shown):

Many municipalities require that windows on upper floors meet a code created to **assist in the prevention of falls**. Marvin offers factory-applied solutions on a wide variety of window types to limit openings to 4" or less. The devices can be disengaged to maintain egress capabilities and are designed to automatically reset each time the window is closed.

#### Sash Limiter:

Permanently limits opening (without the ability to disengage) on windows that do not require egress capability.







Ultimate Double Hung G2 windows and Ultimate Sliding French door



# ULTIMATE

## MARVIN SIGNATURE™ COLLECTION

Part of the Marvin Signature™ collection, our Ultimate product line unites beautiful design with exceptional craftsmanship.

Add character to almost any space with our most extensive selection of shapes, styles, sizes and options, including wood interiors protected by tough extruded aluminum exteriors.

With nearly limitless opportunities for customization, Ultimate can match your vision—and give it room to grow.

# WINDOWS

ULTIMATE | MARVIN SIGNATURE™ COLLECTION



Ultimate Double Hung Insert G2 with Transom windows and Simulated Divided Lites



# DOUBLE HUNG + SINGLE HUNG



Ultimate Double Hung G2 windows with Simulated Divided Lites



Double hung windows feature two movable sash that are hung in the window frame. Both sash can be opened, and they slide and operate vertically. Locking hardware is typically located on the checkrail, the horizontal portion where the top and bottom sash meet. A single hung window's top sash is fixed.

Marvin's revolutionary Ultimate Double and Single Hung G2 windows bring innovative design and function in a classically styled window, offering our exclusive auto-lock feature, tilt wash mode, retractable screens, and interior shades.

Available in sizes up to 5' wide × 10' high.



#### **DOUBLE HUNG AND SINGLE HUNG G2**

- Choose from a retractable screen that is out of sight when the window is closed or a fixed, full, or half exterior screen
- Insert replacement option available
- Concealed Lock Status Sensor available
- Tilt Wash allows easy access to exterior glass for cleaning
- Auto-lock feature activates when sashes are closed, locking the window
- Exclusive Lift Lock hardware moves the locking mechanism on Ultimate Single Hung G2 from the checkrail to the bottom of the lower sash, allowing for easy access to open and lock the window



#### **WOOD DOUBLE HUNG**

- Available exclusively with wood exteriors designed to fit seamlessly into historic homes
- Insert replacement option available
- Full- or half-fixed exterior screen



#### **TILT PAC® DOUBLE HUNG SASH REPLACEMENT SYSTEM**

- Makes it easy to update old, drafty windows and replace damaged sashes
- Ideal for an older double hung window with a frame that's in good condition, but with a sash or hardware that needs replacement
- Available in wood or clad exterior

# CASEMENT



Ultimate Casement Push Out window with Simulated Divided Lites





Casement windows are hinged on the side and can either swing inward or outward with either crank-out or push/pull hardware functionality.

Ultimate Casement windows include innovations like our patented Wash Mode, retractable screens, and interior shades. The revolutionary Wash Mode feature allows access to both sides of the glass from the inside of your home, making window washing stress and ladder-free.

With the most durable hardware in the industry, Ultimate Casements offer easy opening and smooth operation even at the largest sizes. Casements are available in sizes up to 3' 4" wide up to 8' 6" high. French casements are available in sizes up to 5' wide × 6' high.



#### CASEMENT

- Crank-out operation
- Fixed or retractable interior screen
- Narrow frame replacement option available for insert installation
- Concealed Lock Status Sensor available



#### PUSH OUT CASEMENT

- Integrated operating and locking hardware allows the window to be easily unlocked and opened by turning the handle and pushing out the sash
- Pair with retractable or swinging interior screen to allow access to push-out handle
- Narrow frame replacement option available for insert installation



#### INSWING CASEMENT

- Unlock and open the window in one motion by turning the handle and swinging the sash inward
- Can open to 180 degrees, so it is completely out of the way when open
- Fixed exterior screen



#### FRENCH CASEMENT

- Opens like a French door for sweeping, wide views with no center post to spoil the view
- Outswing available with push out or crank out operation and optional interior screen
- Inswing French casements are perfect for areas where an outswing would interfere with a patio, deck, or walkway
- Available in sizes up to 5' wide × 6' high



# AWNING



Ultimate Casement, Awning, and Picture windows with Bronze hardware





Awnings are top-hinged windows that swing out from the bottom. With operating and locking hardware located near the sill, awning windows are ideal for harder-to-reach locations, such as over a sink or kitchen counter. They can be used on their own or as a complement to picture and casement windows.

Awning windows are available in expansive sizes up to 6' wide x 6' high that set the industry standard for maximum visual impact and flexibility. Fixed or retractable interior screens are available.



#### **AWNING**

- Crank out operation
- Narrow frame replacement option available for insert installation
- Concealed Lock Status Sensor available



#### **PUSH OUT AWNING**

- Crank out operation
- Narrow profiles for maximum glass and clean aesthetic
- Narrow frame replacement option available for insert installation
- Concealed Lock Status Sensor available



# GLIDER



Ultimate 4-Panel Bi-Parting Glider window in White painted interior finish



Gliders are windows with panels that slide side to side. They offer a space-saving design option for areas where a swinging window won't work, and they are an excellent egress option for bedrooms.

Marvin's exclusive automatic locking system features an easy-to-reach hide-away handle that blends seamlessly into the sash. With one hand, you can unlock and open the window. The window automatically locks when closed.



#### GLIDER

- Available with one or both operating panels
- Choose from a full exterior screen if both panels operate or a partial screen that covers only operating panels
- Concealed Lock Status Sensor available on units with single operating panel
- Sizes up to 6' wide × 6' high



#### TRIPLE SASH GLIDER

- Fixed center sash with operating panels on both sides
- Exterior screens cover operating panels
- Concealed Lock Status Sensor available
- Sizes up to 10' wide × 6' high



#### FOUR-PANEL BI-PARTING GLIDER

- Center panels slide to each side of the window, providing a pass-through to an outdoor space
- Exterior screens available as a fixed screen or an operable screen to allow for pass-through
- Sizes up to 14' wide × 6' high

# PICTURE WINDOW



Ultimate Direct Glaze Picture and Casement windows





#### VENTING PICTURE

- Patented hidden screen system
- Opens evenly on all sides for passive air exchange
- Provides ventilation when positioned strategically with other windows
- Can enhance security by reducing the appearance of an open window from the exterior
- Available in sizes up to 6' wide x 8' high



#### IN-SASH PICTURE

- Fixed windows designed to match the profiles of operable windows like casement, awning, or double hung
- Available in large sizes up to 8' wide x 8' high



#### DIRECT GLAZE PICTURE

- Fixed window with no sash—the glass is glazed directly into the frame
- Available in stunningly large sizes with widths and heights up to 12'



#### POLYGON

- Fixed windows available in a nearly unlimited variety of sizes and shapes
- Ideal for combining multiple units to create open, light-filled spaces
- Available in stunningly large sizes with widths and heights up to 12'



# BOW + BAY + CORNER



Ultimate Corner and Awning windows



These windows make the most of panoramic views in homes by becoming a design focal point, adding interest to both the interior and exterior of your home. Maximize views and capture light from multiple angles with these unique feature windows.



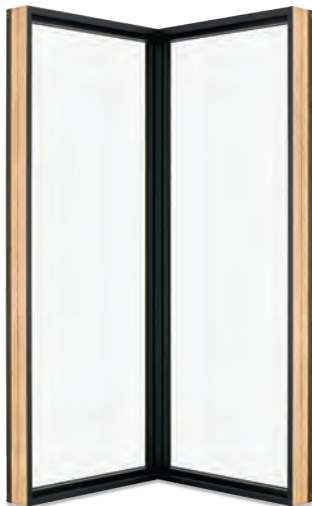
#### **BOW**

- Made up of a series of windows connected in a gentle curve
- Can be created with combinations of 3-6 casement or double hung windows



#### **BAY**

- Made up of a series of windows – traditionally, a picture window flanked by smaller windows (either double hung or casement) at specific angles
- Center window can be a venting or stationary picture window, or an operating unit of the same type as the flankers
- Can be created with combinations of casement or double hung windows



#### **CORNER**

- Provides a clean aesthetic and minimal visual disruption for a dramatic corner view
- Symmetrical or asymmetrical configurations available
- Available in symmetrical or varied widths up to 6' 3" on each side and heights up to 10'

# SPECIALTY



Ultimate Tilt Turn with center In-Sash Picture window





#### TILT TURN

- An ideal solution for additional ventilation or access
- European-style window with two distinct functions: swing it in like a door, or tilt the top of the sash into your room for air flow
- One handle controls both operations
- In European designs, it is often used as an alternative to a door for access to a Juliet balcony
- Can work well in a remodeling project where an egress option is needed



#### HOPPER

- Window that tilts inward with the pivot point on the lowest edge
- Unlock and open the window in one motion by turning the handle and pulling the sash inward
- A smart solution for adding ventilation or light in a lower level



#### SPECIALTY SHAPES

- Go beyond the usual rectangle and choose from a wide variety of shapes to match your home's ideal feature window
- Many specialty shape windows are available as operating windows

# DOORS

ULTIMATE | MARVIN SIGNATURE™ COLLECTION





Ultimate Inswing French door



# SLIDING DOORS



Ultimate Sliding French doors with Simulated Divided Lites





Marvin Ultimate sliding doors set the industry standard for effortless and graceful operation. Our range of sizes allows you to create a door to fit nearly any existing opening with two-, three-, and four-panel configurations. Hardware style and color options, along with custom divided lite patterns, perfectly complement any room or design.

Available in configurations from 5' wide × 6' 6" high up to 16' wide × 8' high with sliding exterior screens.



#### SLIDING FRENCH DOOR

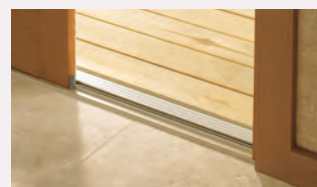
- Classic elegance of a traditional French door with tall bottom rails in a space-saving sliding design



#### SLIDING PATIO DOOR

- Contemporary 3" stiles and rails maximize your view

Our high-performance low-profile sill is an innovative sill option that provides a smooth transition with a flush



threshold between exterior and interior living spaces. The sill is compatible with all Marvin Ultimate Sliding French and Sliding Patio doors.



# SWINGING DOORS



Ultimate Inswing French door with Transom windows



When choosing between inswing or outswing doors, consider traffic flow, furniture placement, and obstacles such as snow on your outdoor space to determine which suits your application best.

Our secure and stable multi-point locking system, available on all Ultimate swinging doors, secures your door at three hidden locking points: at the handle, and at the top and bottom of the door.

Inswing and outswing doors with matching sidelites and transoms are available with sliding or swinging screens, depending on door configuration.



#### SWINGING FRENCH DOOR

- One-, two-, three-, and four-panel configurations
- Short (4") bottom rail option available for more glass and a fresh take on the traditional tall bottom rails typically seen on French doors
- Available in sizes from 2' wide × 6' 8" high up to 14' wide × 8' high
- One- or two-panel doors available up to 9' high
- Inswing or outswing options



#### SWINGING ARCH TOP FRENCH DOOR

- One- and two-panel configurations
- Available in sizes from 2' 6" wide × 6' 8" high up to 6' wide × 9' high



# SCENIC DOORS



Ultimate Bi-Fold doors





Marvin Ultimate scenic doors provide big glass and clean design aesthetics to give you more flexibility and strengthen your connection to the outdoors. Consider smaller two- or three-panel configurations for a feature space in your home. Scenic door installations are typically more complicated than a standard door replacement, making them ideal for new additions and more extensive home remodels.



#### **BI-FOLD DOOR**

- Available in two-panel configurations starting at 5' wide × 6' 8" high up to ten-panel configurations at 55' wide × 10' high
- All-wood surface option available, ideal for dividing interior spaces



#### **MULTI-SLIDE DOOR + LIFT AND SLIDE DOOR**

- Available in two-panel configurations starting at 6' wide × 7' high
- Large sizes available for openings up to 56' wide × 12' high





Ultimate Single Hung G2 window with Contemporary Lift Lock



# OPTIONS

## MARVIN SIGNATURE™ COLLECTION

INTERIORS

STAINS + PAINTS

EXTERIORS

CASINGS

HARDWARE

DIVIDED LITES

SCREENS

GLASS

SHADES

LOCK STATUS SENSOR

# INTERIOR WOOD + FINISH OPTIONS

## WOOD INTERIORS

PINE



VERTICAL GRAIN  
DOUGLAS FIR



DOUGLAS FIR



CHERRY




WHITE OAK




MAHOGANY



MAPLE  
Custom option



BLACK WALNUT  
Custom option

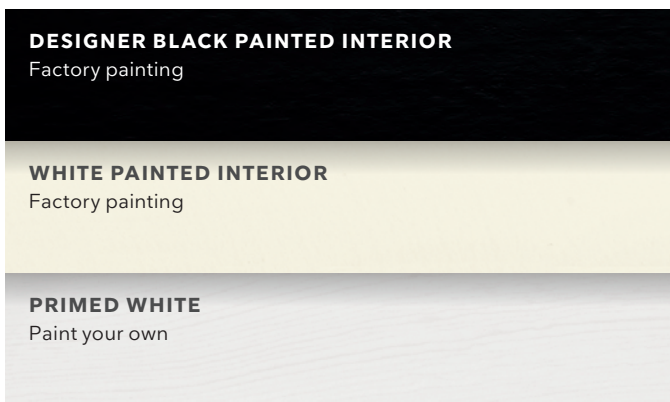




# STAIN



# PAINT



Our multi-step integrated conditioning and staining process begins before assembling windows and doors. Each individual piece of wood is sanded, conditioned, stained, and oven-cured. The finished pieces are clear-coated and then sanded and clear-coated a second time, providing a rich, ideal finish.

We take these extra steps to create a more consistent, high-quality, and durable finish that brings out wood's natural beauty—one that at-home finishing can't replicate.

Stain and paint samples are shown on pine.



# EXTERIOR COLORS + MATERIALS

**STONE WHITE**

**COCONUT CREAM**

**SIERRA WHITE**

**CASHMERE**

**PEBBLE GRAY**

**HAMPTON SAGE**

**CADET GRAY**

**CLAY**

**CASCADE BLUE**

**SUEDE**

**GUNMETAL**

**WINEBERRY**

**BRONZE**

**BAHAMA BROWN**

**EVERGREEN**

**EBONY**

**BRIGHT SILVER (PEARLESCENT)**

**COPPER (PEARLESCENT)**

**LIBERTY BRONZE (PEARLESCENT)**

**CUSTOM COLOR: ANY COLOR YOU WANT**



Complement any project or design with our high-quality exterior options. Choose from extruded aluminum or wood.

## EXTRUDED ALUMINUM

**Extruded aluminum** is an extremely tough cladding that protects wood windows, mimics the profiles of wood, and provides superior durability.

Select a color from our palette of 19 durable extruded aluminum colors, including a spectrum of rich hues and three pearlescent finishes. If you have more specialized needs, we can work with you to create a custom color.

## WOOD EXTERIORS

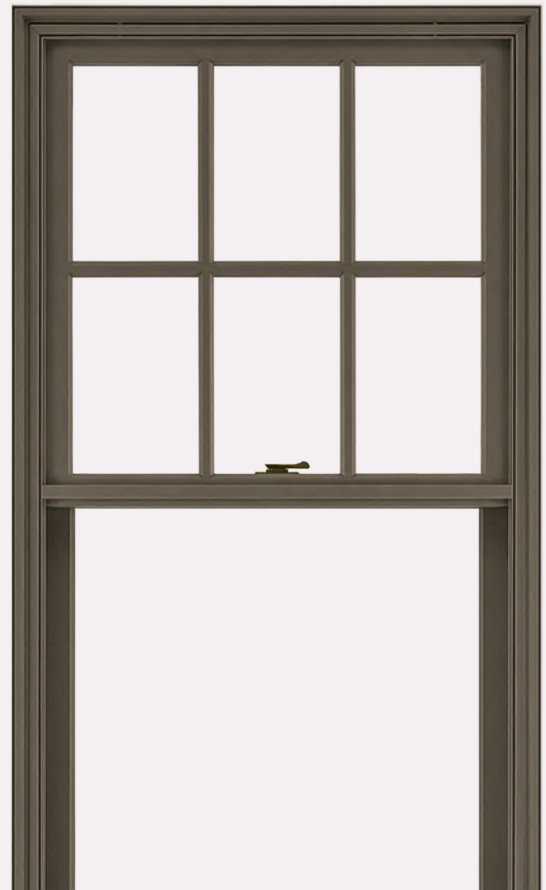
**Wood** is a premium material for windows and doors, offering classic aesthetic appeal, many options for customization, and design versatility.

We treat exposed millwork with a water repellent wood preservative to help it last longer. Choose from one of four exterior options. Each is ready to be finished to match your project's exacting requirements.



Ultimate Double Hung G2 window in Ebony

Ultimate Double Hung G2 window in Suede





# EXTERIOR CASINGS







**BRICK MOULD**



**FLAT**



**THORTON**



**POTTER**



**GRAYSON**



**STRATTON**



**COLUMBUS**



**RIDGELAND**

Exterior casings for Ultimate aluminum clad windows and doors are made of the same ultra-durable extruded aluminum and are available in a variety of standard or custom profiles. They provide the look of wood with low maintenance.

Match existing details or set your home apart with a unique casing. Choose a color that matches your window, or select a distinct color to showcase your new windows and doors.

Aluminum-clad products come standard without exterior casing. If desired, a casing option can be specified at time of order.

All wood windows and doors come standard with wood Brick Mould casing applied. Flat casing can be specified at time of order.

Custom casings are available to match any historical profiles.

# WINDOW HARDWARE STYLES





## Window Hardware and Finishes

Our durable and elegant hardware is engineered to work seamlessly with any decor. Choose a finish to complement your architectural style.

### WINDOW HARDWARE STYLES



**AUTO-LOCKING CHECKRAIL  
HARDWARE SYSTEM**  
Single / Double Hung G2



**AUTO-LOCKING LOWER SASH  
TRADITIONAL LIFT LOCK**  
Single Hung G2



**AUTO-LOCKING LOWER SASH  
CONTEMPORARY LIFT LOCK**  
Single Hung G2



**SASH LOCK**  
Tilt Pac



**FOLDING CRANK HANDLE**  
Casement and Awning



**CRANK HANDLE**  
Casement and Awning



**FOLDING HANDLE**  
Glider



**PUSH-OUT HANDLE**  
Casement/Awning Push Out



**TILT TURN HANDLE**

### FINISHES



# DOOR HARDWARE STYLES

## Door Hardware and Finishes

Marvin Ultimate door hardware is not only beautiful, it's also engineered for durability. Add style to your home with its graceful curves, ergonomic design, and elegant finishes.

Choose from a variety of finishes to complement your Marvin Ultimate doors. The Physical Vapor Deposition\* (PVD) process adds a layer of toughness to hardware exposed to environmental factors like direct sun and humidity. PVD finishes resist fading and discoloration, even in coastal areas. Satin Nickel, Brass, and Oil-Rubbed Bronze finishes are available with a PVD finish.

\*Physical Vapor Deposition: highest grade corrosion resistance finish. Available on exterior door hardware.

Ultimate Inswing French door with Contemporary swinging hardware in Matte Black



# DOOR HARDWARE STYLES

# FINISHES



**TRADITIONAL SWINGING FRENCH DOOR HANDLE**



**TRADITIONAL SLIDING FRENCH DOOR HANDLE**



**TRADITIONAL SLIDING PATIO DOOR HANDLE**



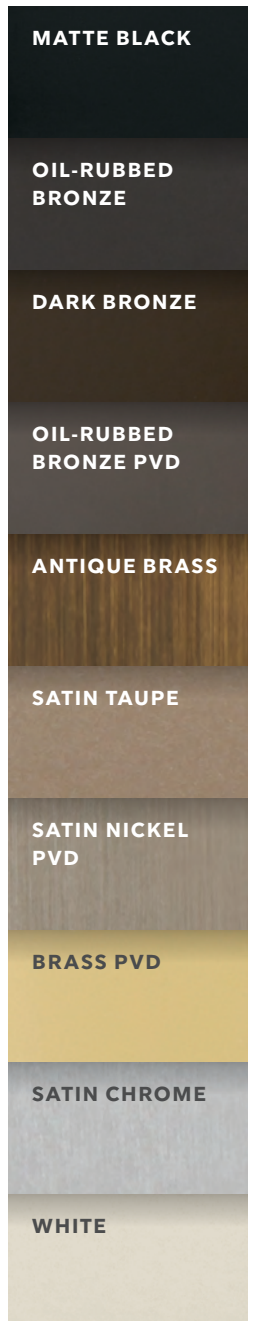
**CONTEMPORARY SWINGING DOOR HANDLE**



**CONTEMPORARY SLIDING DOOR HANDLE**



**ADJUSTABLE HINGE**



**MATTE BLACK**

**OIL-RUBBED BRONZE**

**DARK BRONZE**

**OIL-RUBBED BRONZE PVD**

**ANTIQUE BRASS**

**SATIN TAUPE**

**SATIN NICKEL PVD**

**BRASS PVD**

**SATIN CHROME**

**WHITE**

# MARVIN GALLERY HARDWARE

Bouvet Arch Twisted Hardware in 1055 Black



Marvin Gallery Hardware is a curation of door hardware from three renowned manufacturers. Each set chosen meets Marvin's high standards for aesthetics, quality, and craftsmanship. A perfect complement to Marvin Ultimate doors.

This hardware collection makes it easy for you to find the hardware choice that perfectly reflects your unique design sensibilities, vision, and personality. From contemporary to traditional, each beautiful piece heightens the aesthetics of any Marvin door.



Ashley Norton Rectangular Meridian hardware in White Bronze



# GALLERY HARDWARE STYLES

## ASHLEY NORTON



## BOUVET



## ROCKY MOUNTAIN HARDWARE



See more selections at [Marvin.com/GalleryHardware](http://Marvin.com/GalleryHardware)

# HOME AUTOMATION: LOCK STATUS SENSOR

## Concealed automation to preserve peace of mind

Our home automation sensors work with your security system to help protect your home. This optional upgrade offers concealed design, which preserves the beauty of your Ultimate windows and doors without impacting performance, design, or your view.



Our factory-installed Lock Status Sensor sends a signal to your integrated security system to indicate if a window or door is closed and locked, or if it is unlocked.

Each window and door equipped with the Marvin Lock Status Sensor arrives with the sensor already installed and concealed, so there's no need for post-installation modifications that could cause damage, require unsightly add-ons, or affect warranty. Unlike competitors' options that only talk to specific systems, the Marvin Lock Status Sensor is system agnostic, so it works seamlessly with most leading third-party home automation HUB and service providers via wired or wireless connection.



Ultimate Double Hung G2 windows and Ultimate Inswing French door with concealed Lock Status Sensors





# SHADES

Ultimate Double Hung G2 windows featuring Almond Shades



Marvin shades are both beautiful and functional. They arrive fully integrated, matching any current Marvin Ultimate interior finish and appearing as a seamless part of the window or door.

Unlike other shades, they don't protrude into a living space or interfere with hardware. Their fit is precise, with virtually no light bleed. Functionally graceful, they work without any visible cords or pulleys.

If you're not sure which shades to choose because you're still figuring out your design or color palette, don't worry—you don't have to decide right away. Shades can be ordered later on Marvin Ultimate products that offer the shade option. We'll have the order information, so we can custom make and finish shades to perfectly fit your new windows.



# COLOR OPTIONS

Decide how much—or how little—light you want in your home, and our shades will do the rest. All 15 colors are available with light-filtering fabric, which allows some light in. Five options are also available in blackout fabric, which blocks light almost completely.



# SCREENS

## WINDOW SCREENS



### RETRACTABLE SCREEN

#### Double/Single Hung, Casement, and Awning

A unique concealed design makes this screen nearly undetectable when it is in the retracted position. Like an airplane shade, the Retractable Screen smoothly tucks away when not in use.



### DOUBLE HUNG FULL OR HALF SCREEN

Full or half screens are exterior screens with aluminum surrounds. The full screen covers both the top and bottom sash. The half screen covers only the bottom sash to allow for a clear view through the top portion of the window.



### SWINGING SCREEN

This screen swings inward to allow for operation of push-out casement and awning windows.



### CASEMENT AND AWNING WOOD SCREEN SURROUND

The patented wood screen surround can be painted or stained to match the interior of your window.



# DOOR SCREENS



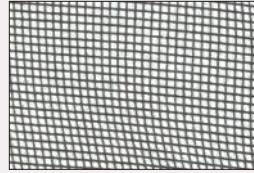
**ULTIMATE SWINGING SCREEN**



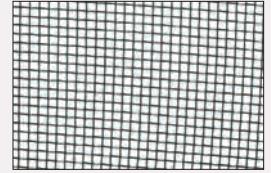
**ULTIMATE SLIDING SCREEN**

# SCREEN MESH

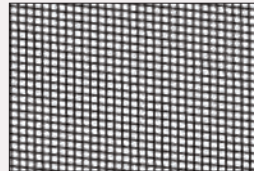
Charcoal Fiberglass mesh is standard on both standard wood and aluminum screen surrounds. Charcoal High-Transparency Mesh is the standard mesh for retractable screens and Ultimate Casement wood screens.



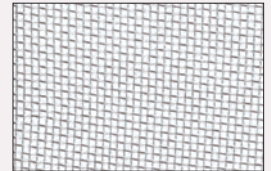
**CHARCOAL FIBERGLASS**



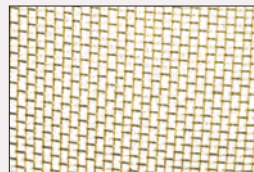
**CHARCOAL ALUMINUM WIRE**



**BLACK ALUMINUM WIRE**



**BRIGHT ALUMINUM WIRE**



**BRIGHT BRONZE WIRE**



**CHARCOAL HIGH-TRANSPARENCY MESH**



**ALUMINUM SURROUND**



**WOOD SURROUND**

# DIVIDED LITES



## Endless Design Possibilities

Our custom capabilities allow us to create almost any divided lite pattern to match your design style. Divided lites can feature an array of widths, unique profiles, rectangular or curved cuts, and more. Choose from an existing lite cut or specify custom divided lites according to a new design.





**SIMULATED DIVIDED LITE (SDL)**

SDL bars are permanently adhered to both sides of the glass. Simulated Divided Lites with Spacer Bars (SDLS) are an energy-efficient way to create the look of authentic divided lites.



**AUTHENTIC DIVIDED LITE (ADL)**

Separate panes of glass are glazed between bars—the way windows have been made since the beginning. Available exclusively with wood exterior units.



**GRILLES-BETWEEN-THE-GLASS (GBG)**

Grilles are permanently installed between the glass panes. This low-maintenance grille offers the look of a divided lite pattern with the ease of cleaning just one pane of glass. Available with different interior and exterior colors.

**STICKING AND PROFILES**

Sticking refers to the interior profiles of your wood window. Choose from the standard Ogee profile (used on traditional projects) or the optional clean, contemporary Square sticking.



Ogee



Square



Square sticking

**FIVE STANDARD BAR WIDTHS**

Ogee:



5/8"

7/8"

(default width)

1 1/8"

1 15/16"

2 13/32"

Square Sticking:



5/8"

7/8"

(default width)

1 1/8"

1 15/16"

2 13/32"

# GLASS

## DUAL PANE VS. TRIPLE PANE



### DUAL PANE

Our standard glazing is dual pane: two panes of glass with Low E coatings and insulated with argon gas. Compared to a single glass pane, dual pane glass cuts heat loss significantly because of the insulating space between the glass layers.

### TRIPLE PANE: IS IT RIGHT FOR YOU?

While Marvin triple pane windows are engineered for long-lasting energy efficiency, not all windows are made the same. Simply having three panes of glass doesn't necessarily mean a triple pane window is more energy efficient. Glass coatings, the type of gas used in the spaces between the glass, the design of the window, the materials used, and how well it is installed all play a role in achieving the overall energy efficiency. Consider the energy efficiency of the entire window, not just the number of panes.

Visit [marvin.com/EnergyRatings](http://marvin.com/EnergyRatings) to view detailed performance ratings for all Marvin products.



### TRIPLE PANE

Triple Pane glazing provides three panes of glass with Low E coatings. Two glass spaces are insulated with argon gas between the panes.

A poorly designed or installed window, or a window made with inferior materials like vinyl, may not be energy efficient regardless of the number of panes of glass. Materials shrink and expand with cold/heat cycles and seals can begin to fail. Once seals fail, the energy efficiency the window claimed when it was new becomes greatly reduced. Consider your home's unique needs before assuming that triple pane, or tripane, is always the best solution.

## COATINGS & ENERGY EFFICIENCY

Low E coatings are a microscopically thin, virtually invisible metallic layer on the glass surface help manage the amount of heat either radiated through a window or reflected away from it. Marvin products are offered with a variety of Low E coating options for thermal performance best suited for your heating and cooling needs.

The national ENERGY STAR® program recognizes products that meet strict energy efficiency guidelines to suit climates in different areas of the country. No matter where you are located, we offer energy efficient solutions that meet or exceed ENERGY STAR guidelines.

Visit [marvin.com/energy](http://marvin.com/energy) for more information.

- LOW E1** Single layer of metallic coating, which reduces heat loss to the outside while allowing the highest levels of solar heat into a room. Generally used in Northern climates where heating is prioritized over cooling.
- LOW E2** Double layer of metallic coating. Provides year-round performance and comfort, and works well in most geographic regions and climates where a mix of heating and cooling is required.
- LOW E3** Triple layer of metallic coating provides the most protection against solar heat gain (warmth from the sun). Most commonly used in climates where sun exposure is intense and cooling is a priority.
- LOW ERS** A high-performance insulating glass option that features a Low E coating on the Room-Side glass together with a coating of Low E2 or Low E3 on the second glass surface. This option is designed to reflect radiant heat back into the room. It is not recommended for some northern zones as condensation is more likely to occur.



## DECORATIVE + SPECIALTY GLASS OPTIONS

Glass goes beyond energy efficiency. Decorative and privacy glass, and even specialty glass that provides additional sound reduction, can be paired with thermal performance options for a window or door that is perfect for your home.

### DECORATIVE GLASS

Decorative glass options on Ultimate windows and doors are offered with your choice of Low E coatings for energy efficiency and your own unique style.



**BRONZE TINT**



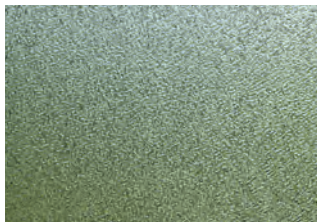
**GRAY TINT**



**GREEN TINT**



**BEVELED**



**OBSCURE**



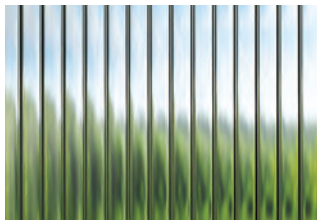
**FLEMISH**



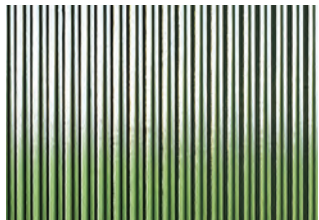
**GLUE CHIP**



**RAIN**



**REEDED**



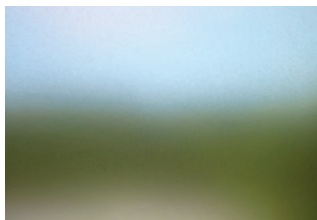
**NARROW REED**



**AQUALITE**



**WHITE LAMINATED**



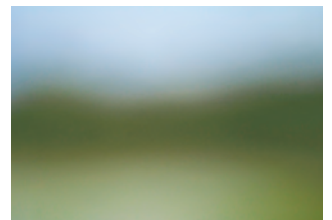
**SANDBLASTED**



**LEADED**



**V-GROOVE**



**FROST**

### SPECIALTY GLASS

Our specialty glass options include glazing for unique project needs like sound reduction, high altitudes, Sea Turtle Conservation Codes, and California fire zones. We also offer laminated glass in products designed specifically for hurricane zones.

# ULTREX FIBERGLASS

## VS. OTHER COMPOSITES

Born from a Marvin innovation 20+ years ago, Ultrex® has led the industry ever since on virtually every measurable scale, outperforming vinyl with its durability and performance.

### **DURABLE MATERIAL**

Highly durable, strong as steel, and extremely reliable, Ultrex's patented finish is the best in the industry. It resists fading, chalking, cracking, and peeling—so it's tough and incredibly low-maintenance.

### **LONG-LASTING PERFORMANCE**

Unlike vinyl and other composite materials, Ultrex expands and contracts at virtually the same rate as glass, so it works with glass rather than against it. This means its seals aren't as prone to leaking and windows aren't subjected to sagging issues.



STRONG  
AND DURABLE  
FIBERGLASS



Elevate French door cross section





Elevate Casement and Picture windows



# ELEVATE

## MARVIN ELEVATE™ COLLECTION

Balancing beautiful design with superior strength, the Marvin Elevate™ collection delivers style in any climate.

Previously known as Integrity Wood-Ultrex®, Elevate windows and doors feature warm wood interiors that can blend in or stand out, with fiberglass exteriors for lasting durability.

The collection offers a range of carefully selected features and options, making it as versatile as it is elegant.

# WINDOWS

MARVIN ELEVATE™ COLLECTION





Elevate Double Hung windows with Window Opening Control Devices



# DOUBLE HUNG



Elevate Double Hung windows with White hardware



Double hung windows can be opened from the bottom or lowered from the top, pairing clean, balanced design with superior function. Tilt the sash in or remove for easy cleaning. Coordinating Picture and Transom windows are available.



#### DOUBLE HUNG

- Common egress solutions for bedrooms
- Full or half exterior screens
- Insert replacement option available
- Available in sizes up to 4' 6" wide × 7' high

#### Options



**COTTAGE  
SASH RATIO**



**REVERSE COTTAGE  
SASH RATIO**

# CASEMENT + AWNING



Elevate Casement windows with White hardware and Simulated Divided Lites



A casement window is a side-hinged window that swings out from the left or right, while awnings are top-hinged windows that swing out from the bottom. Most casement and awning windows crank open and closed.

Many casements on the market have multiple locking levers which can be hard to reach and don't always engage properly. Elevate Casement and Awning windows feature a concealed

multi-point sequential locking system, which securely locks the window at multiple points along the side stile with one easy-to-reach lever near the bottom of the window.

Casement and awning windows offer interior screens with White, Almond Frost, or a wood-wrapped surround that can be finished to match your wood interior. Coordinating Picture and Transom windows are available.



#### CASEMENT

- Crank out operation
- Common egress solution for bedrooms
- Narrow frame replacement option available for insert installation
- Available in sizes up to 3' wide × 6' high



#### AWNING

- Crank out operation
- Great solution for over a sink or counter
- Narrow frame replacement option available for insert installment
- Available in sizes up to 4' wide × 4' high

#### Option



#### SIMULATED CHECKRAIL

A simulated checkrail is a 2<sup>11</sup>/<sub>32</sub>" high divided lite bar that can be used to simulate the look of a double hung window while still enjoying the operation and egress capability of a casement. With custom placement anywhere on the window, and paired with 7/8" divided lite bar patterns above and below, this option offers wonderful flexibility for creating a unique look that's perfect for your home. See the divided lites section on page 107 for more details.

# GLIDER



Elevate Glider window



On a glider, either the left or right sash slides open. Locking mechanisms keep windows secure, and the operating sash tilts inward for easy cleaning. Coordinating Picture and Transom windows are available.

---

**GLIDER**

- Common egress solution for bedrooms
- Exterior half screen covers operating panels
- Available in sizes up to 6' wide × 5' high

**TRIPLE SASH GLIDER**

- Center picture window flanked by two operating panels
- Exterior screens cover operating panels
- Available in sizes up to 8' wide × 5' high

# SPECIALTY



Elevate Round Top windows with Simulated Divided Lites





#### ROUND TOP

The Elevate Round Top window is an exciting complementary piece, adding light and flair to windows and turning doors into grand entrances.

- Wide range of sizes
- Available in quarter-round, half-round, and elliptical shapes



#### SPECIALTY SHAPES

Elevate Polygon windows offer exceptional design versatility. Select specialty shapes for sidelights and transoms, or combine them into a breathtaking wall of windows

- Eight shapes, including rectangles, triangles, pentagons, and octagons
- Available in sizes up to 49 square feet
- Longest leg may not exceed 9'



#### BAY AND BOW

**Bays** are made up of three windows—either casements or double hungs—joined together at 30- or 45-degree angles.

- Configurations are available up to 7' wide × 6' high
- Traditionally, a larger picture window is flanked by smaller operating windows

**Bows** are made up of a series of 4 or 5 equally sized casement windows connected in a gentle curve.

- Configurations are available up to 10' wide × 6' high

# DOORS

MARVIN ELEVATE™ COLLECTION





Elevate Inswing French door



# SLIDING + SWINGING DOORS



Elevate 4-Panel Bi-Parting Sliding French door



Elevate doors are the perfect complement to Elevate replacement windows. Our doors are available with custom sizing and the same great hardware, color, insulated glass, divided lite patterns, and exterior trim options as our windows.



#### **SLIDING FRENCH DOOR**

The Elevate Sliding French door combines the elegance and wider stiles and rails of a French door with the practicality of a sliding door.

- Two-, three-, and four-panel configurations
- Available in large sizes up to 16' wide × 8' high
- Sliding exterior screens available



#### **SLIDING PATIO DOOR**

The Elevate Sliding Patio door's narrow stiles and rails offer contemporary styling with more glass to showcase outdoor views.

- Two and three-panel configurations
- Available in sizes up to 9' wide × 8' high
- Sliding exterior screens



#### **FRENCH DOOR (INSWING & OUTSWING)**

With one-, two-, and three-panel configurations up to 8' high, Elevate Inswing and Outswing French doors offer tremendous versatility to create entrances and connections with exterior living spaces.

Inswing doors are an ideal fit for doors that open over steps or areas where rain would fall on them when open, as well as in climates prone to snow that would block use during the winter. Inswing doors have exterior screens.

Outswing doors open your home to an outdoor space without interrupting interior flow or design.





Essential Casement windows in Bronze



# ESSENTIAL

## MARVIN ESSENTIAL™ COLLECTION

Characterized by clean lines, powerful performance, and streamlined options, the Marvin Essential™ collection makes it easier to achieve design and quality.

Previously known as Integrity All Ultrex®, Essential features durable fiberglass exteriors and interiors, making it stylistically striking and virtually maintenance free—inside and out.

# WINDOWS + DOORS

MARVIN ESSENTIAL™ COLLECTION





Essential Glider and Picture windows



# DOUBLE HUNG + SINGLE HUNG



Essential Double Hung windows with White hardware





Double hung windows can be opened from the bottom or lowered from the top, pairing clean, balanced design with function. Tilt the sash in or remove for easy cleaning.

Single hung windows look just like a double hung, but they have a fixed top sash that doesn't open or tilt in.



#### **DOUBLE HUNG + SINGLE HUNG**

- Common egress solutions for bedrooms
- Full or half exterior screens
- Available with white, black, or dark bronze/brown interiors
- Insert replacement available
- Available in sizes up to 4' wide x 6' 5" high

#### **Options**



**COTTAGE  
SASH RATIO**



**REVERSE COTTAGE  
SASH RATIO**



# CASEMENT + AWNING



Essential Casement, Awning, and Polygon windows



A casement window is a side-hinged window that swings out from the left or right, while awnings are top-hinged windows that swing out from the bottom. Most casement and awning windows crank open and closed.

Many casements on the market have multiple locking levels which can be hard to reach and don't always engage properly. Our casement and awning windows feature a concealed multi-point sequential locking system, which securely locks the window at multiple points along the side stile with one easy-to-reach lever near the bottom of the window.



#### CASEMENT

- Crank out operation
- Common egress solution for bedrooms
- Available with white, black, or dark bronze/brown interiors and matching interior screens
- Narrow frame replacement option available for insert installation
- Available in sizes up to 3' wide × 6' high



#### AWNING

- Crank out operation
- Available with white, black, or dark bronze/brown interiors and matching interior screens
- Narrow frame replacement option available for insert installation
- Available in sizes up to 4' wide × 3' high



# GLIDER + SPECIALTY



Essential Glider window with White hardware





#### DUAL AND TRIPLE SASH GLIDER

- Dual sash configurations up to 6' wide × 5' high
- Triple sash configuration features center picture window flanked by two operating gliders in sizes up to 8' wide × 5' high
- Available with white, black, or dark bronze/brown interiors
- Exterior half screen covers operating panels
- Narrow frame replacement available for installation



#### ROUND TOP

- Available in quarter-round, half-round, and elliptical shapes
- Available with white, black, or dark bronze/brown interiors
- Wide range of sizes up to 8' wide × 7' high



#### SPECIALTY SHAPES

Essential Polygon windows offer exceptional design versatility. Select specialty shapes for sidelights and transoms, or combine them into a breathtaking wall of windows

- Available in eight unique shapes including rectangles, triangles, pentagons, and octagons
- Available with white, black, or dark bronze/brown interiors
- Available in sizes up to 49 square feet
- Longest leg may not exceed 9'

# SLIDING PATIO DOOR



Essential Sliding Patio door and Double Hung windows





The Essential Sliding Patio door delivers style, durability, and unobstructed views that show more glass – ideal for contemporary styles.

Select the configuration best for your space. Choose from left, middle, or right operating panels in two- or three-panel doors.



#### **SLIDING PATIO DOOR**

- Two-panel configurations available up to 6' wide × 8' high
- Three-panel configurations available at 9' wide × up to 8' high
- Top-hung screen operates smoothly without jamming
- Available with white, black, or dark bronze/brown interiors





Elevate Double Hung windows with Simulated Divided Lites



# OPTIONS

MARVIN ELEVATE™ + ESSENTIAL™ COLLECTIONS

INTERIORS + FINISHES

EXTERIORS + TRIM

HARDWARE

DIVIDED LITES

SCREENS

GLASS



# INTERIORS + EXTERIORS



Elevate Casement and Polygon windows in Bronze



## ELEVATE INTERIORS

Elevate features rich pine interiors. Choose bare wood to stain or paint to match your decor. Factory-applied clear coat and white or Designer Black painted interior finish options are available.

<p><b>BARE WOOD</b> Wood comes bare and ready to be painted or stained</p>
<p><b>CLEAR FINISH</b> Wood is prefinished in the factory with a clear coat (no stain) so it needs no further finishing</p>
<p><b>WHITE PAINTED INTERIOR</b> Factory painted</p>
<p><b>DESIGNER BLACK PAINTED INTERIOR</b> Factory painted</p>

## ESSENTIAL INTERIORS

Fiberglass interiors in your choice of three colors.

<p><b>STONE WHITE</b> Available with your choice of exterior finish colors</p>
<p><b>BRONZE</b> Available when paired with Bronze exterior finish</p>
<p><b>EBONY</b> Available when paired with Ebony exterior finish</p>

## ELEVATE + ESSENTIAL FIBERGLASS EXTERIORS

Elevate and Essential windows and doors have a durable strong proprietary Ultrex® fiberglass exterior, featuring our patented AAMA-verified\* acrylic finish for low-maintenance durability and superior aesthetics.

Choose from a variety of colors and exterior trim configurations to match your style.

<p><b>STONE WHITE</b></p>
<p><b>CASHMERE</b></p>
<p><b>PEBBLE GRAY</b></p>
<p><b>EVERGREEN</b></p>
<p><b>BRONZE</b></p>
<p><b>EBONY</b></p>

**\*What is an AAMA-verified finish?**

The American Architectural Manufacturers Association (AAMA) recognizes materials that pass numerous, rigorous tests. These tests simulate the harsh conditions that a finish will encounter throughout the life of the window or door. Passing these specification tests and achieving AAMA 624 verification gives Marvin Elevate and Essential products independent verification that the Ultrex finish is best in class among fiberglass products.

The patented Ultrex finish is the best in the industry—the first and only to have achieved AAMA 624 verification.

Marvin also provides a best-in-class finish with the highest available AAMA verification for extruded aluminum (2605) standard on all Ultimate extruded aluminum clad windows and doors.

# EXTERIOR TRIM

Ultrex® Exterior Trim in Flat Configuration around Casement window



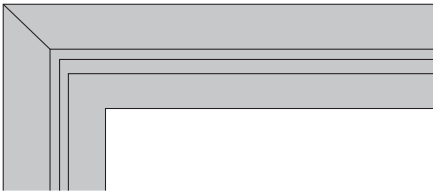


We extend the same durability, performance, and look of Essential and Elevate windows and doors to our exterior trim made of genuine Ultrex fiberglass. Available for all rectangular products in six exterior colors to either match or contrast with your Elevate and Essential window and door exteriors.

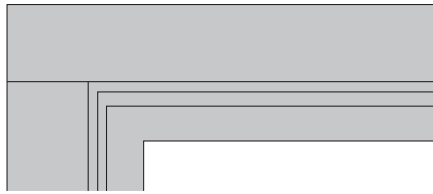
## WINDOW + DOOR TRIM CONFIGURATIONS

Your choice of three configurations will be factory cut for an incredibly precise fit and efficient installation.

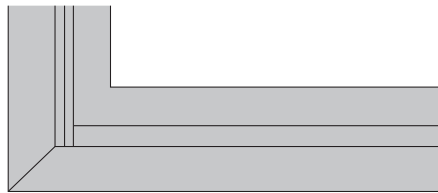
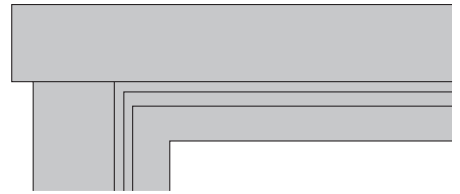
**BRICK MOULD**



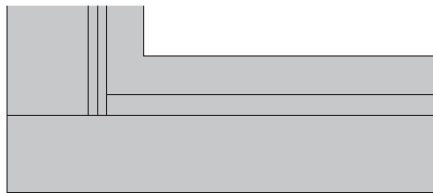
**FLAT**



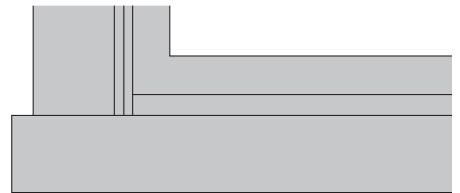
**FLAT RANCH**



**BRICK MOULD**



**FLAT**

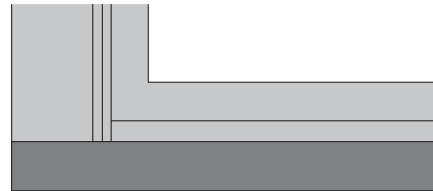


**FLAT RANCH**

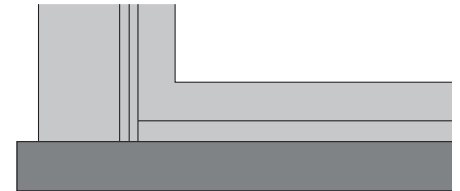
## SILL NOSE (WINDOWS ONLY)



**BRICK MOULD  
WITH SILL NOSE**



**FLAT  
WITH SILL NOSE**



**FLAT RANCH  
WITH SILL NOSE**

# HARDWARE STYLES + FINISHES

## WINDOW HARDWARE

Windows feature classic low-profile durable hardware for clean aesthetics, safety, and security.



### SASH LOCK

Double Hung, Single Hung, and Glider



### SASH LIFT

Optional on Elevate Double Hung Insert windows only



### FOLDING HANDLE

Casement and Awning

## DOOR HANDLES

Door handles are available in two distinct hardware styles.



### CAMBRIDGE



### NORTHFIELD

### Door Handle Options

- Available keyed-alike option (use one key on multiple locks, with up to 3 different keys on each project)
- Choose distinct exterior and interior handle colors in a color that matches or complements the exterior color and the interior finish of your door



## FINISHES



Choose from a variety of finishes to complement your Essential and Elevate windows and doors.

The Physical Vapor Deposition (PVD) process adds a layer of toughness to hardware exposed to environmental factors like direct sun and humidity. PVD finishes resist fading and discoloration, even in coastal areas. Satin Nickel, Brass, and Oil-Rubbed Bronze finishes are available with a PVD finish.

Physical Vapor Deposition has the highest grade corrosion resistance finish. Available on exterior door hardware.



Elevate Casement Narrow Frame window with Oil Rubbed Bronze folding handle and lock lever



Essential Awning windows with folding handles in White



# SCREENS



Elevate Inswing French doors with swinging Screens





## WINDOWS

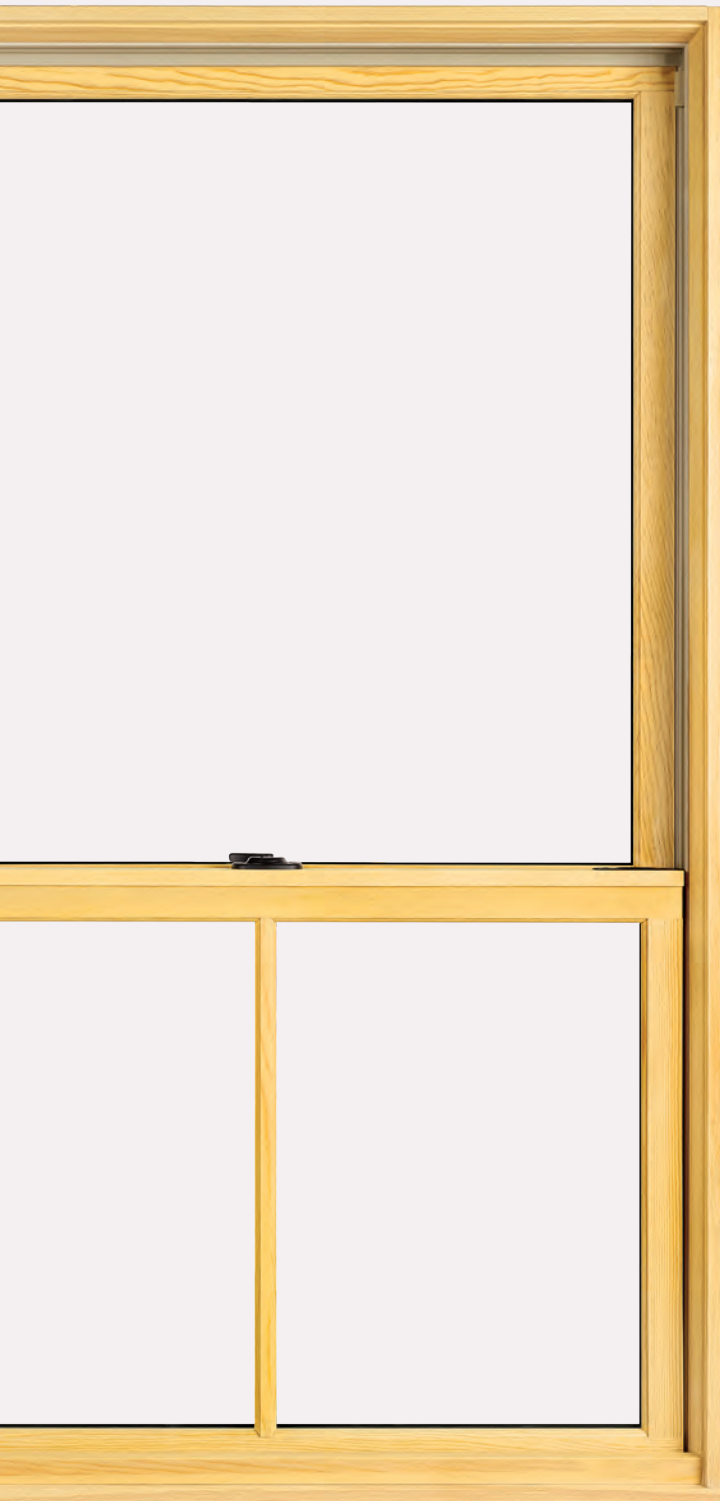
- Interior screens for casement and awning windows are available with a paintable or stainable wood interior surround, or an aluminum surround in white, black, dark brown/bronze, or almond frost
- Exterior screens for double hung, single hung, and glider windows are available in colors to match Ultrex® fiberglass exteriors
- Single and double hung windows are available with either a standard full screen or optional half screen



## DOORS

- Elevate and Essential doors are available with either sliding or swinging screens, depending on door configuration
- Top-hung sliding screens are designed for smooth operation without getting caught on dirt or pebbles in the bottom track

# DIVIDED LITES







**SIMULATED DIVIDED LITE (SDL)**

A simulated divided lite (SDL) is an energy-efficient way to create the look of authentic divided lites. SDL bars are permanently adhered to both sides of the glass. Spacer bars can be installed between the bars inside the glass, creating the look of individual panes.

- Available on Elevate products



**GRILLES-BETWEEN-THE-GLASS (GBG)**

Low-maintenance grilles offer the look of a divided lite pattern with the ease of cleaning just one pane of glass. Exterior colors match Ultrex® fiberglass exteriors, and a selection of interior colors match or complement interiors.

- Available on both Elevate and Essential products



**SIMULATED CHECKRAIL**

The simulated checkrail is the perfect solution when your home style calls for the look of a double hung window, but operation, egress, or performance demand another solution. Essentially, it gives a casement window the look of a double hung.

With custom placement anywhere on the window and paired with 7/8" divided lite bar patterns above and below, this option offers wonderful flexibility for creating a unique look that's perfect for your home. Available on Elevate Casement, Awning, and Glider windows and all Elevate doors.

- Available on Elevate products

**PATTERNS**

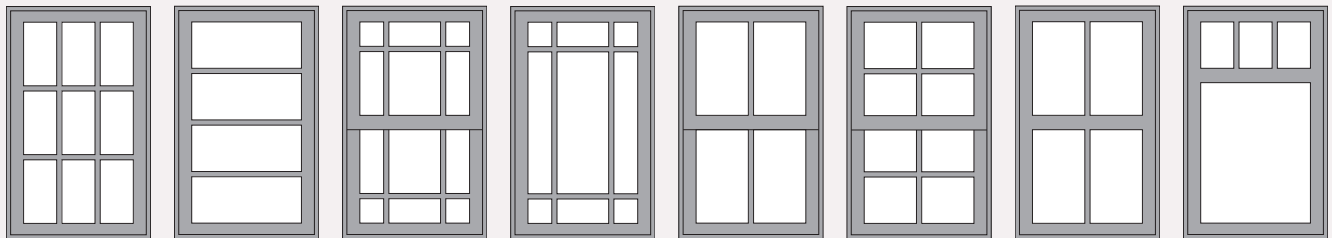
These illustrations offer a sampling of Simulated Divided Lite (SDL) patterns that can be selected on Elevate windows and doors. Enjoy exceptional design flexibility by combining standard 7/8" bars with the 2 11/32" Simulated Checkrail.



7/8"  
(default width)



2 11/32"



# GLASS

## DUAL PANE VS. TRIPLE PANE



### DUAL PANE

Our standard glazing is dual pane: two panes of glass with Low E coatings and insulated with argon gas. Compared to a single glass pane, dual pane glass cuts heat loss significantly because of the insulating space between the glass layers.

### TRIPLE PANE: IS IT RIGHT FOR YOU?

While Marvin triple pane windows are engineered for long-lasting energy efficiency, not all windows are made the same. Simply having three panes of glass doesn't necessarily mean a triple pane window is more energy efficient. Glass coatings, the type of gas used in the spaces between the glass, the design of the window, the materials used, and how well it is installed all play a role in achieving the overall energy efficiency. Consider the energy efficiency of the entire window, not just the number of panes.

Visit [marvin.com/EnergyRatings](http://marvin.com/EnergyRatings) to view detailed performance ratings for all Marvin products.



### TRIPLE PANE

Triple Pane glazing provides three panes of glass with Low E coatings. Two glass spaces are insulated with argon gas between the panes.

A poorly designed or installed window, or a window made with inferior materials like vinyl, may not be energy efficient regardless of the number of panes of glass. Materials shrink and expand with cold/heat cycles and seals can begin to fail. Once seals fail, the energy efficiency the window claimed when it was new becomes greatly reduced. Consider your home's unique needs before assuming that triple pane, or tripane, is always the best solution.

## COATINGS & ENERGY EFFICIENCY

Low E coatings are a microscopically thin, virtually invisible metallic layer on the glass surface help manage the amount of heat either radiated through a window or reflected away from it. Marvin products are offered with a variety of Low E coating options for thermal performance best suited for your heating and cooling needs.

The national ENERGY STAR® program recognizes products that meet strict energy efficiency guidelines to suit climates in different areas of the country. No matter where you are located, we offer energy efficient solutions that meet or exceed ENERGY STAR guidelines.

Visit [Marvin.com/energy](http://Marvin.com/energy) for more information.

- 
- LOW E1** Single layer of metallic coating, which reduces heat loss to the outside while allowing the highest levels of solar heat into a room. Generally used in Northern climates where heating is prioritized over cooling.

---

  - LOW E2** Double layer of metallic coating. Provides year-round performance and comfort, and works well in most geographic regions and climates where a mix of heating and cooling is required.

---

  - LOW E3** Triple layer of metallic coating provides the most protection against solar heat gain (warmth from the sun). Most commonly used in climates where sun exposure is intense and cooling is a priority.

---

  - LOW ERS** A high-performance insulating glass option that features a Low E coating on the Room-Side glass together with a coating of Low E2 or Low E3 on the second glass surface. This option is designed to reflect radiant heat back into the room. It is not recommended for some northern zones as condensation is more likely to occur.



## DECORATIVE AND SPECIALTY GLASS OPTIONS

Glass goes beyond energy efficiency. Decorative and privacy glass, and even specialty glass that provides additional sound reduction, can be paired with thermal performance options for a window or door that is perfect for your home.

### DECORATIVE GLASS

Offered with your choice of Low E coatings for energy efficiency and your own unique style.



**BRONZE TINT**



**GRAY TINT**



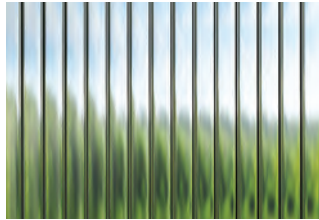
**GREEN TINT**



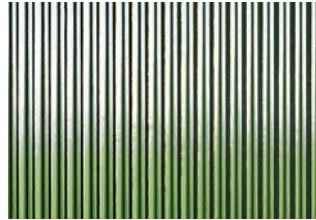
**GLUE CHIP**



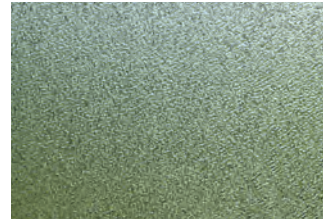
**RAIN**



**REEDED**



**NARROW REED**



**OBSCURE**



**FROST**

### SPECIALTY GLASS

Our specialty glass options include glazing for unique project needs like sound reduction, high altitudes, and California fire zones. We also offer laminated glass in Elevate products designed specifically for hurricane zones.

## GLOSSARY

### ACTIVE PANEL

The operating portion of a door that holds the glass and is separate from the frame.

### ASSEMBLY

Single units mullled (attached) together to create one larger grouping.

### AWNING

A top-hinged window that swings out from the bottom. Available with crank out hardware or as a push out model.

### BAY WINDOWS

A series of windows installed in an angled “bay” formation with a head and seat board. Typically two smaller operating units flank a larger fixed center window.

### BOW WINDOWS

A series of adjoining window units that are configured in a gradual arc.

### CASEMENT

A side-hinged window that swings inward or outward from the left or right. Available with crank out hardware or as a push out model.

### CHECK RAIL

The horizontal portion of a double hung window where the top and bottom sash meet. Simulated check rails use divided lite bars to simulate the look of a double hung window in a casement or glider.

### CLAD

Interior window and door parts (typically wood) covered with a more weather-resistant exterior-facing material. Often extruded aluminum or fiberglass-clad wood windows.

### CONDENSATION

Moisture that forms on a surface. This could be a result of a difference in temperature between the surface and the air, or high humidity in the home.

### DAYLIGHT OPENING (DLO)

The area of the window or door where light passes through; the width and the height of the visible glass.

### DIRECT GLAZE

Stationary or fixed window with no sash for maximum daylight opening. Glass is glazed directly into the frame.

### DOUBLE HUNG

Double hung windows have two movable sash which are hung in the window frame and slide/operate vertically.

### FRAME

The stationary portion of a window that surrounds either the glass (direct glaze) or the sash (operating or stationary).

### FRENCH DOOR

A style of patio door featuring the traditional styling of taller top and bottom rails. Available in a variety of configurations (inswing, outswing, sliding) with multiple panels. Swinging doors available with optional arch tops.

### GLIDER

Horizontal operating window in which sash glide left or right. Available in dual-sash configurations, triple-sash with a larger center picture unit, or four sash with center sash that slide out to the side to reveal a wide pass-through opening.

### GRILLES

Removable interior wood bars or muntins made to simulate authentic divided lites. Grilles are often rectangular or diamond shaped and are easily removed for cleaning purposes.

### GRILLES BETWEEN THE GLASS (GBG)

Dividers placed between the panes of glass to simulate authentic divided lites. GBGs facilitate window cleaning with no bars on the exterior or interior surface of the glass.

### HARDWARE

The locks, crank handles, and hinges on windows and doors used to operate and secure them.

### HEAD JAMB

The horizontal piece forming the top of the frame on a window or door.

### INACTIVE PANEL

Fixed or non-operating portion of the door that holds the glass and is separate from the frame.

### INSWING FRENCH DOOR

A French-style patio door with panels that swing in to the interior of the home.

### LIFT AND SLIDE

A large sliding door with proprietary hardware that lifts the panels to allow them to effortlessly slide open or closed. Available in pocket or stacked configurations. Pocket panels slide into a concealed wall pocket, while stacked panels slide and stack at either one or both sides of the door frame.

### MULL/MULLING

The actual components used to attach two or more window and/or door units together to form an assembly. The process of joining multiple units to each other.

### MUNTIN

Bars that form the decorative grille pattern on a window or door.

### OPERATOR

An operating sash, panel or unit in a window or door.



**OUTSWING FRENCH DOOR**

A French style patio door with panels that swing out to the exterior of the home.

**PANEL**

Stationary or operating portion of the door that holds the glass and is separate from the frame.

**PICTURE WINDOW**

A fixed/stationary window to align with the profiles of operating windows. Sash is typically non-operable and attached directly to the frame. Often available in significantly larger sizes than accompanying operating window. Venting picture units are available.

**RAILS**

The cross or horizontal members of the framework of a sash, door, screen, or other panel assembly.

**ROUGH OPENING**

The opening in the wall where a window or door unit is to be installed. Openings are larger than the size of the unit to allow room for insulation.

**ROUND TOP**

Window with an arched or semicircle top, often placed above a rectangular window or door, thus forming the round top appearance. Available as fixed or operating units.

**SASH**

The operating and/or stationary portion of the window that holds the glass and is separate from the frame.

**SCREENS**

A close-mesh woven material of metal or fiberglass attached to an aluminum or wood surround. Screens inhibit entry of insects, yet allow for light, air and unobstructed views.

**SIDE JAMB**

The left and right vertical pieces forming the frame on a window or door.

**SILL**

The horizontal piece forming the bottom of the frame on a window or door, resting on the foundation or the bottom of the rough opening and supporting the frame.

**SIMULATED DIVIDED LITE (SDL)**

Muntins permanently adhered to the interior and exterior of a large piece of glass to simulate the appearance of individual lites.

**SINGLE HUNG**

A window very similar to a double hung window, except that the top sash is stationary or non-operable.

**SLIDING FRENCH DOOR**

A French style patio door available in two-, three-, or four-panel configurations. Left, right and/or center panels operate when grouped in three. When grouped in four, two center panels slide out to the side to reveal a wide walk-through center opening.

**SLIDING PATIO DOOR**

A sliding door featuring narrow stiles and rails for more contemporary styling and increased daylight opening. Available in configurations similar to the Sliding French door.

**STATIONARY**

A non-operating sash, panel, or unit.

**STILES**

The upright or vertical members of the framework of a sash, door, screen, or other panel assembly.

**ULTREX®**

A proprietary pultruded fiberglass material made of resin and glass fibers with an integrated patented finish. Available exclusively in products from Marvin.

**UNIT**

One single window or door.

**VENTING PICTURE**

An expansive picture window designed to open evenly on all sides, allowing for passive air exchange with minimal disruption of exterior spaces. Hidden screen system allows for fully unobstructed views.

**WEATHER STRIP**

A strip of resilient material designed to seal the sash and frame members in order to reduce air and water infiltration.

**CONTACT****QUESTIONS OR CONCERNS?**

For questions about your window or doors, including defects, contact your dealer. For installation issues such as leaks around your window, issues with caulking, trim, or other parts surrounding the window, contact your installer.

Marvin U.S. Sales and Service:  
1-888-537-7828



At Marvin, our focus is on creating long-lasting, energy-efficient windows and doors that are just right for your unique home.

We understand and appreciate the investment you are making, and we work hard to ensure that replacing your windows and doors with us is a rewarding experience.

Thank you for considering Marvin for your project. We look forward to working together.

**[MARVIN.COM/REPLACEMENT](https://www.marvin.com/replacement)**

©2019 Marvin Lumber and Cedar Co., LLC. All rights reserved.  
®Registered trademark of Marvin Lumber and Cedar Co., LLC.  
ENERGY STAR® and the ENERGY STAR certification mark are registered US marks.

Part #19983033. December 2019.

Colors shown in printed materials are simulations and may not precisely duplicate product or finish colors. Contact your local Marvin dealer to view actual product and finish color samples.